

SPECIFICATIONS

Platform scale

Platform scale

PFS-1K ~ 1T-

SPEC.No.EN217002

1/1

Performance

- Weighting : 1 kg ~ 1 t
- Accuracy : 1/2 000
- Detection method : Single point support by the load cell
- Other : With built-in overload protection mechanism (in the transportation)

Electric characteristics

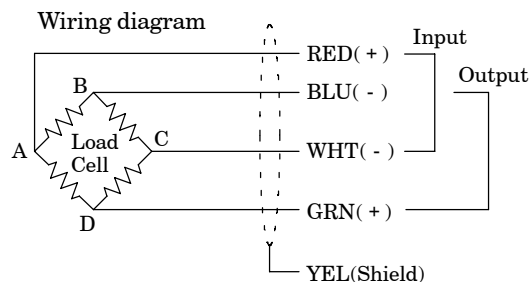
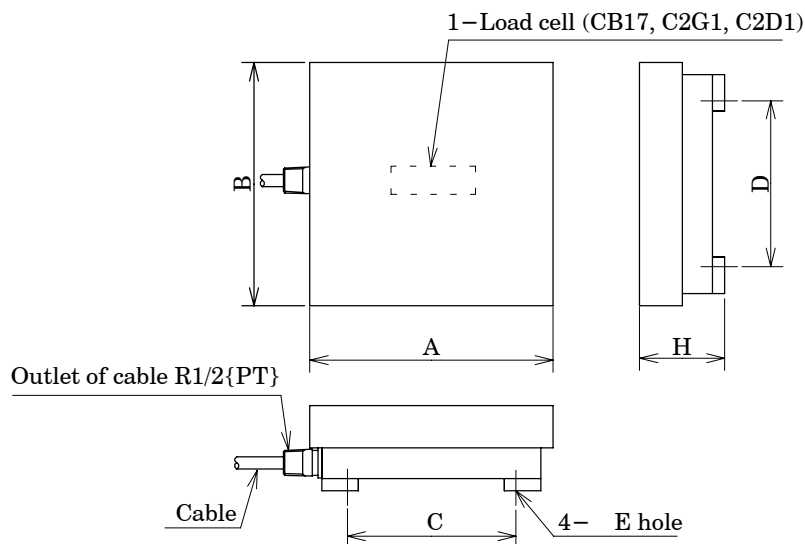
- Excitation, recommended : 10 V or less
- Excitation, at maximum : 15 V

Temperature characteristics

- Temperature range, compensated : - 10 to 50
- Temperature range, safe : - 20 to 70

- Cable : 6.3, 4-cores shielded cable 5 m directly attached
Y type insulated solderless terminals are attached at cable end.

- Paint : Lacquer painting (Munsell 7.5BG6/1.5)
(Painting is not in a stainless section.)



Composition	
Main body	1
Inspection data sheet	1
Instruction manual	1

Outline dimensions

Unit : mm

P/N	Weighting	A	B	C	D	E	H	Applied load cell
PFS-1K-	1 kg	200	200	150	150	10	70	CB17-2K-11
PFS-3K-	3 kg	300	300	200	200	10	80	C2G1-6K
PFS-5K-	5 kg	300	300	200	200	10	80	C2G1-10K
PFS-10K-	10 kg	300	300	200	200	10	80	C2G1-20K
PFS-30K-	30 kg	400	400	280	280	15	110	C2G1-60K
PFS-50K-	50 kg	600	450	480	330	15	130	C2D1-100K
PFS-100K-	100 kg	600	450	480	330	15	130	C2D1-300K
PFS-300K-	300 kg	600	450	480	330	15	130	C2D1-450K
PFS-500K-	500 kg	600	450	480	330	15	170	C2D1-800K
PFS-1T-	1 t	800	600	680	480	15	220	C2D1-1500K

Model specification P F S - []

- Material 1 : General Steel
- 2 : General Steel with stainless cover
- 3 : Stainless steel

Note) Please consult beforehand when you use this unit under the intrinsically safe construction. Specifications and outline dimensions and so on which have printed may subject to change for the purpose of Improvement without notice.