

LOAD CELL

UWV1-2T ~ 100T

Spec. No. EN213021A

1/2

SPECIFICATIONS

Low Profile Universal service
Shearweb Type Load Cell

Performance

Rated capacity	: 19.61 kN{2 tf} ~ 980.7 kN{100 tf}
Safe overload	: 150 %R.C
Ultimate overload	: 200 %R.C.
Rated output	: 3 mV/V ± 0.0075 mV/V
Non linearity	: 0.1 %R.O.(UWV1-50T ~ 100T: 0.2 %R.O.)
Hysteresis	: 0.1 %R.O.(UWV1-50T ~ 100T: 0.2 %R.O.)
Repeatability	: 0.02 %R.O.(UWV1-50T ~ 100T: 0.05 %R.O.)

Electrical

Excitation, recommended	: 12 V or less
Excitation, at Max.	: 20 V
Zero balance	: ± 0.03 mV/V
Input resistance	: 350 ± 3.5
Output resistance	: 350 ± 5
Insulation resistance	: 2 000 M or more (DC 50 V) (Between bridge and main body)

Temperature

Temperature range, compensated	: -10 to 70
Temperature range, safe	: -20 to 80
Temperature effect on zero balance	: 0.03 %R.O./10
Temperature effect on output:	0.03 %LOAD/10

Cable : 10 mm, 4 core shield 3 m cable directly attached.
Y type crimp-type terminal lugs are attached at cable end.

Class of protection : Equivalent to IP64. (Main body only)

Materials of the element : Alloy steel

Paint color : Painted with epoxy resin
(Half polished resemblance color with Munsell 6GY3.5/2.)

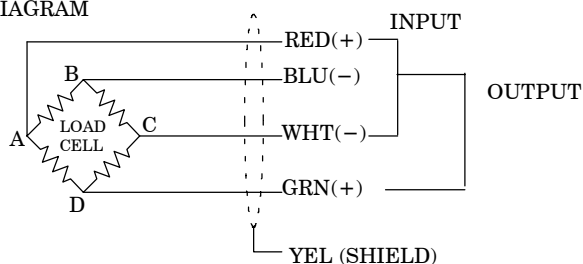
Durability : 10⁶ times with rated load applied.

Note) R.O. indicates Rated Output and R.C. indicates Rated Capacity.

Polarity output will become plus (+) when the direction of compression load is applied.

If polarity change is required, change wiring of blue and green.

WIRING DIAGRAM



Composition

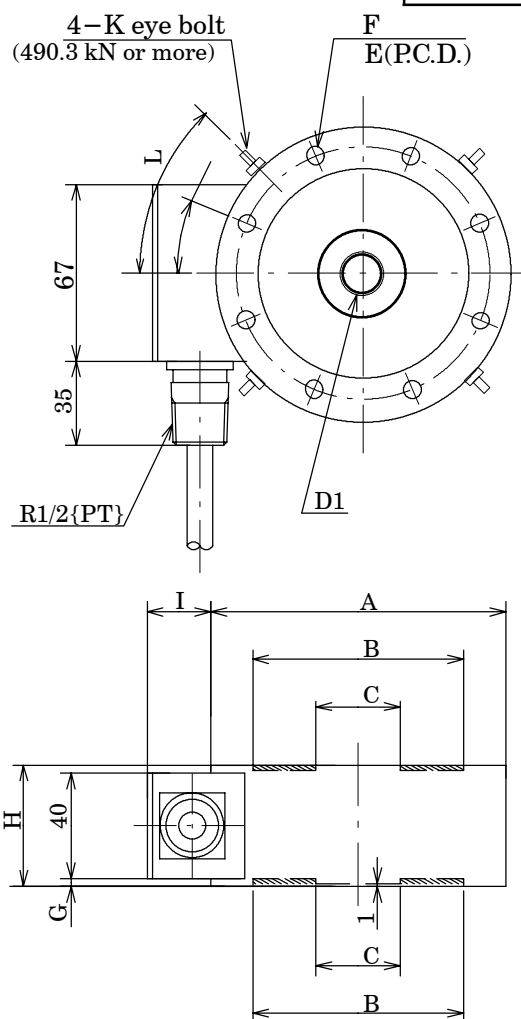
Main body	1
Inspection data	1
Instruction manual	1

LOAD CELL

UWV1-2T ~ 100T

Spec. No. EN213021A

2/2



▨ Filled with polyurethane resin

OUTLINE DIMENSIONS

Unit : mm

P/N	Rated capacity	A	B	C	D1 2nd class screw	E	F
UWV1-2T	19.61 kN{2 tf}	112	80	32	M16 × 2	96	8- 6.6
UWV1-5T	49.03 kN{5 tf}	118	82	36	M18 × 1.5	100	8- 9
UWV1-10T	98.07 kN{10 tf}	138	94	48	M24 × 2	116	8- 11
UWV1-20T	196.1 kN{20 tf}	182	126	76	M39 × 2	154	8- 14
UWV1-50T	490.3 kN{50 tf}	226	153	92	M50 × 2	190	12- 18
UWV1-100T	980.7 kN{100 tf}	310	212	138	M76 × 3	260	16- 22

P/N	G	H	I	K	L		Rated displacement	Natural frequency (Hz)	Weight (Approving)
UWV1-2T	3	46	24	-	-	22.5 °	0.05	4 900	3.1
UWV1-5T	3	46	24	-	-	22.5 °	0.05	6 500	4
UWV1-10T	9	60	25	-	-	22.5 °	0.05	6 300	6.4
UWV1-20T	15	80	28	-	-	22.5 °	0.05	4 800	15.5
UWV1-50T	28	105	29	M8	30 °	15 °	0.05	5 400	29
UWV1-100T	45	140	31	M10	45 °	11.25 °	0.09	3 400	74

Specifications and outline dimensions and so on which have printed may subject to change for the purpose of improvement without notice.