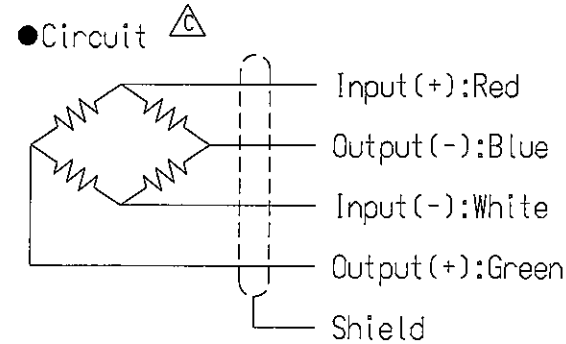
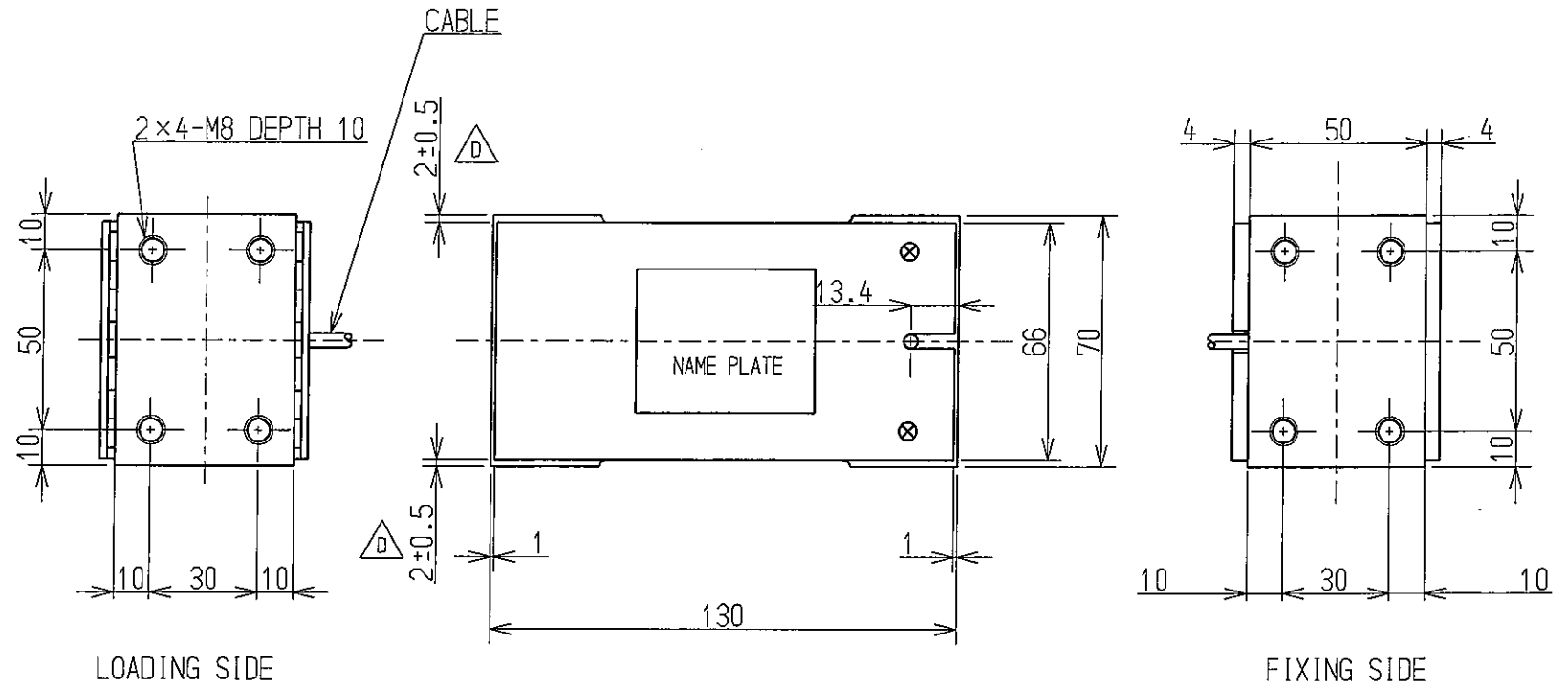


# LOAD CELL TYPE U2D1-100K

## Specifications

- Loading performance
  - Rated capacity(R.C.) : 980.7 N(100 kgf)
  - △ Safe overload : 200 %R.C.
  - △ Ultimate overload : 300 %R.C.
  - △ Rated output(R.O.) : 2.0 mV/V±0.2 mV/V
  - Non-linearity : 0.015 %R.O.
  - Hysteresis : 0.015 %R.O.
  - Repeatability : 0.02 %R.O.
  - Creep : 0.02 %R.O./20 min.
  - Creep recovery : 0.02 %R.O./20 min.
- Electrical performance
  - Recommended excitation : 12 V or less
  - Maximum excitation : 20 V
  - Zero balance : ±0.1 mV/V
  - Input resistance : 420 Ω <sup>+30</sup>/<sub>-20</sub> Ω B
  - Output resistance : 350 Ω ± 5 Ω
  - Insulation resistance (bridge-body) : 2000 MΩ or more(DC 50 V)
- Temperature performance
  - Compensated temperature range : -10 °C to 50 °C
  - Safe temperature range : -10 °C to 50 °C
  - Temperature effect on zero balance : 0.04 %R.O./10 °C
  - Temperature effect on output : 0.012 %LOAD/10 °C
- The others
  - △ Cable : φ3.2, 4 core shielded 30cm
  - △ Element : Alloy Aluminum
  - Weight : Approx. 800 g
- Eccentric error
  - Size of loading plate : Max. 400 mm×600 mm
  - Installation : Be sure to adjust center of loading plate to center of load cell.
  - Accuracy : 0.02 %R.O. with 1/2 rated load applied at 150 mm from center



公布
K
S
T
F

					<b>ミネベア株式会社</b> MINEBEA CO.,LTD.			単位 UNIT mm	材質 MATERIAL	作成日 DATE 1983.12.20
					<b>計測機器事業部</b>			尺度 SCALE FREE	表面粗さ SURF.ROUGH.	品名 DESCRIPTION
D	2009.1.9	KN09-0005	T.TATSUTA	A.MURO				寸法 L	公差	OUTLINE (英文)
C	2003.5.6	KN03-0228	A.YOSHIDA	A.MURO	APPROVED	CHECKED	DRAWN	<L ≤ 4	±0.1	品番 PART NO.(MODEL NO.)
B	2002.12.05	KN02-0430	KIMURA	A.MURO	Kikuchi	T.Koyama	T.KIMURA	4 < L ≤ 16	±0.2	U2D1-100K
A	2002.11.7	KN02-0384	KIMURA	A.MURO				16 < L ≤ 63	±0.3	葉番 SHEET
符号 MARK	日付 DATE	変更事項 REASON	ECN NO.	担当 ENGINEER	承認 APPROVED			63 < L ≤ 250	±0.5	図番 DRAWING NO.
								250 < L ≤ 1000	±0.8	K102907-2
								角度 DEG	±0.5	表面処理 FINISH
										改訂 REV. D