

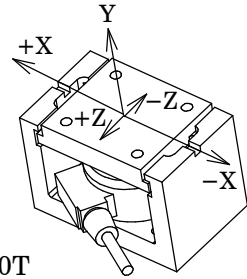
## SPECIFICATIONS

SPEC.No.EN216074-C

1/4

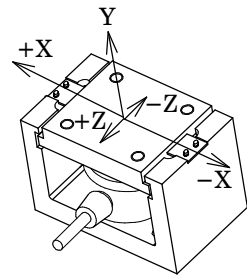
Load cell mounting attachment with slide stop mechanism for CMM1-50K~2T/CMP1-250K~20T

- Parts No. : SCA-CMM1-50K/2T
- Applicable load cell : CMM1-50K~2T
- Allowable horizontal load :  $\pm 29.42$  kN {3 tf} (X axis)
- Allowable horizontal moving length :  $\pm 10$  mm (Z axis)
- Allowable lift-off protection : 19.61 kN {2 tf} (Y axis)
- Materials : SS type metal (with plating process)
- Weight : 6 kg approximately
- Accessory : Dummy load cell 1 piece  
Instruction manual 1 piece
- Options : Mounting plate P/N. : SCAP-※



- Parts No. : SCA-CMP1-250K/5T, SCA-CMP1-10T
- Applicable load cell : CMP1-250K~10T
- Allowable horizontal load : 98.07 kN {10 tf} (X axis)
- Allowable horizontal moving length :  $\pm 10$  mm (Z axis)
- Allowable lift-off protection : 19.61 kN {2 tf} (Y axis)
- Materials : SS type metal (with plating process)
- Weight : SCA-CMP1-250K/5T : 15 kg approximately  
SCA-CMP1-10T : 16 kg approximately
- Accessory : Dummy load cell 1 piece  
Guide plate 1 piece  
Instruction manual 1 piece
- Options : Mounting plate P/N. : SCAP-※

- Parts No. : SCA-CMP1-250K/5T-S, SCA-CMP1-10T-S
- Applicable load cell : CMP1-250K~10T
- Allowable horizontal load : 58.84 kN {6 tf} (X axis)
- Allowable horizontal moving length :  $\pm 10$  mm (Z axis)
- Allowable lift-off protection : 49.03 kN {5 tf} (Y axis)
- Materials : SCS type stainless steel, equivalent to SUS304
- Weight : 17 kg approximately
- Accessory : Guide plate 1 piece  
Instruction manual 1 piece
- Options : Mounting plate P/N. : SCAP-※  
Dummy load cell P/N. : SCAD-※



## SPECIFICATIONS

Mounting attachment with slide stop mechanism SCA-CMM1-※/SCA-CMP1-※(-S)

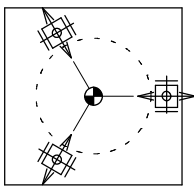
SPEC.No.EN216074-C

2/4

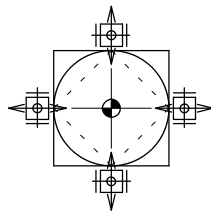
● Parts No.	: SCA-CMP1-20T-S
Applicable load cell	: CMP1-20T
Allowable horizontal load	: 117.7 kN {12 tf} (X axis)
Allowable horizontal moving length	: ± 10 mm (Z axis)
Allowable lift-off protection	: 49.03 kN {5 tf} (Y axis)
Materials	: SCS type stainless steel, equivalent to SUS304
Weight	: 29 kg approximately
Accessory	: Guide plate 1 piece Instruction manual 1 piece
Options	: Mounting plate P/N. : SCAP-※ Dummy load cell P/N. : SCAD-※

### Remark

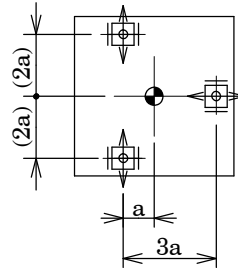
- 1) Secure the space around the tank bracket for using the jack.
- 2) The mounting height is recommended near the center of gravity elevation for the tank.  
(Depending on the conditions, overturning protection device should be required separately.)
- 3) Minebea recommends 3 points of supports basically.



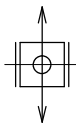
120° ± 3 equally divided



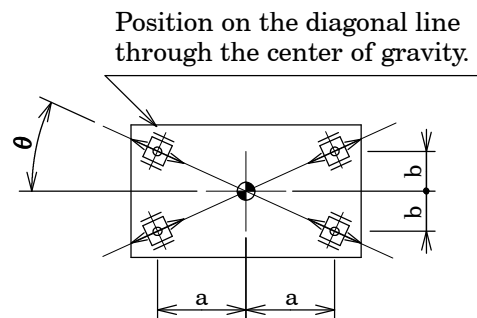
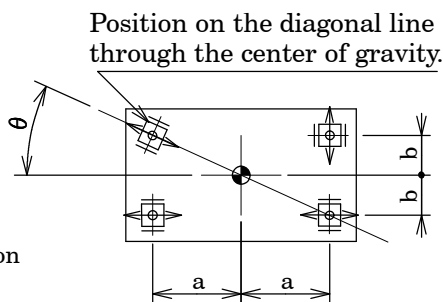
90° ± 4 equally divided



Marks for the plate



(Arrow mark direction : Z axis)

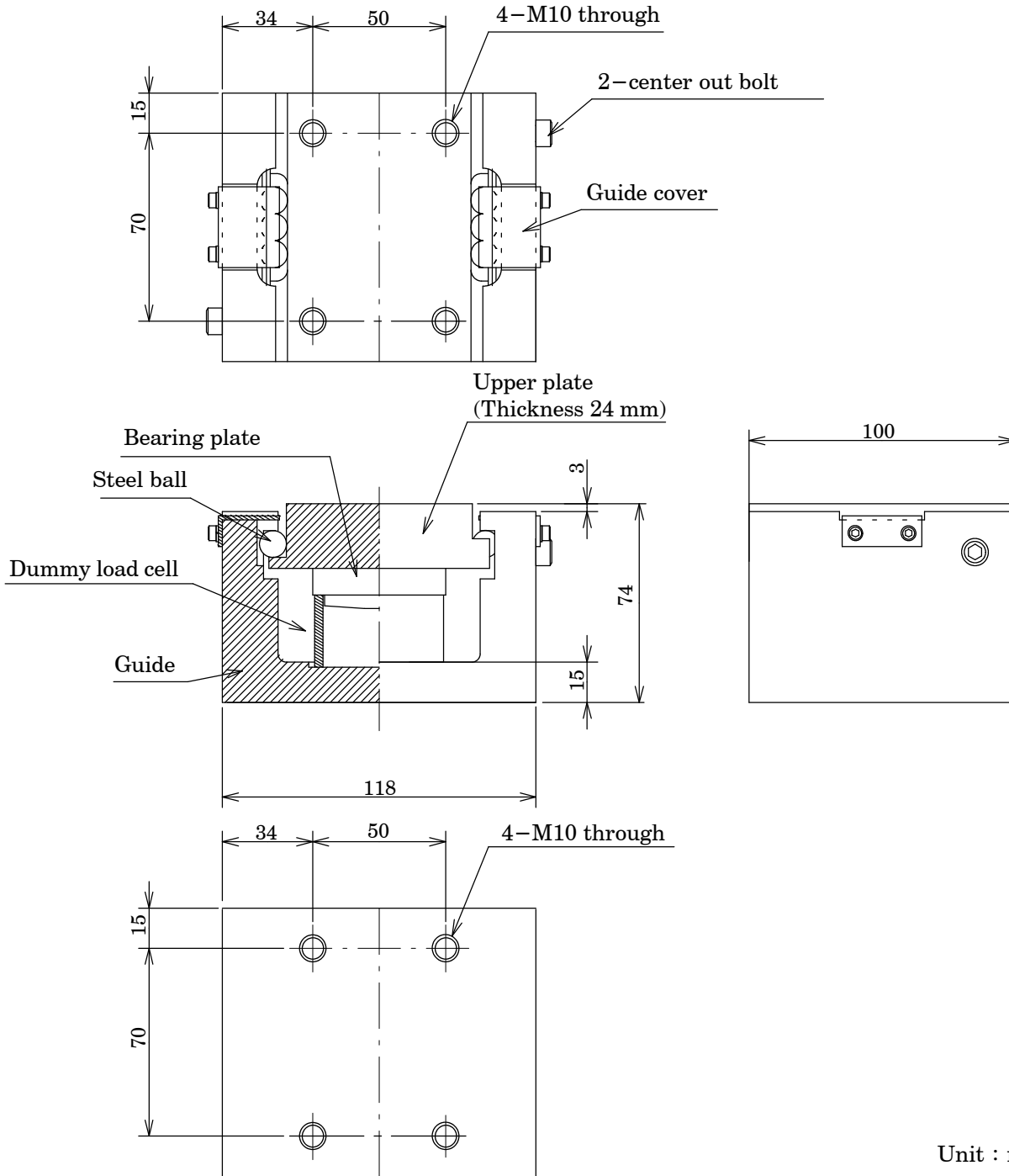


## SPECIFICATIONS

Mounting attachment with slide stop mechanism SCA-CMM1-※/SCA-CMP1-※(-S)

SPEC.No.EN216074-C

3/4



Unit : mm

Parts No. table

P/N	Applicable load cell	Weight (Approx.kg)
SCA-CMM1-50K/2T	CMM1-50K~2T	6

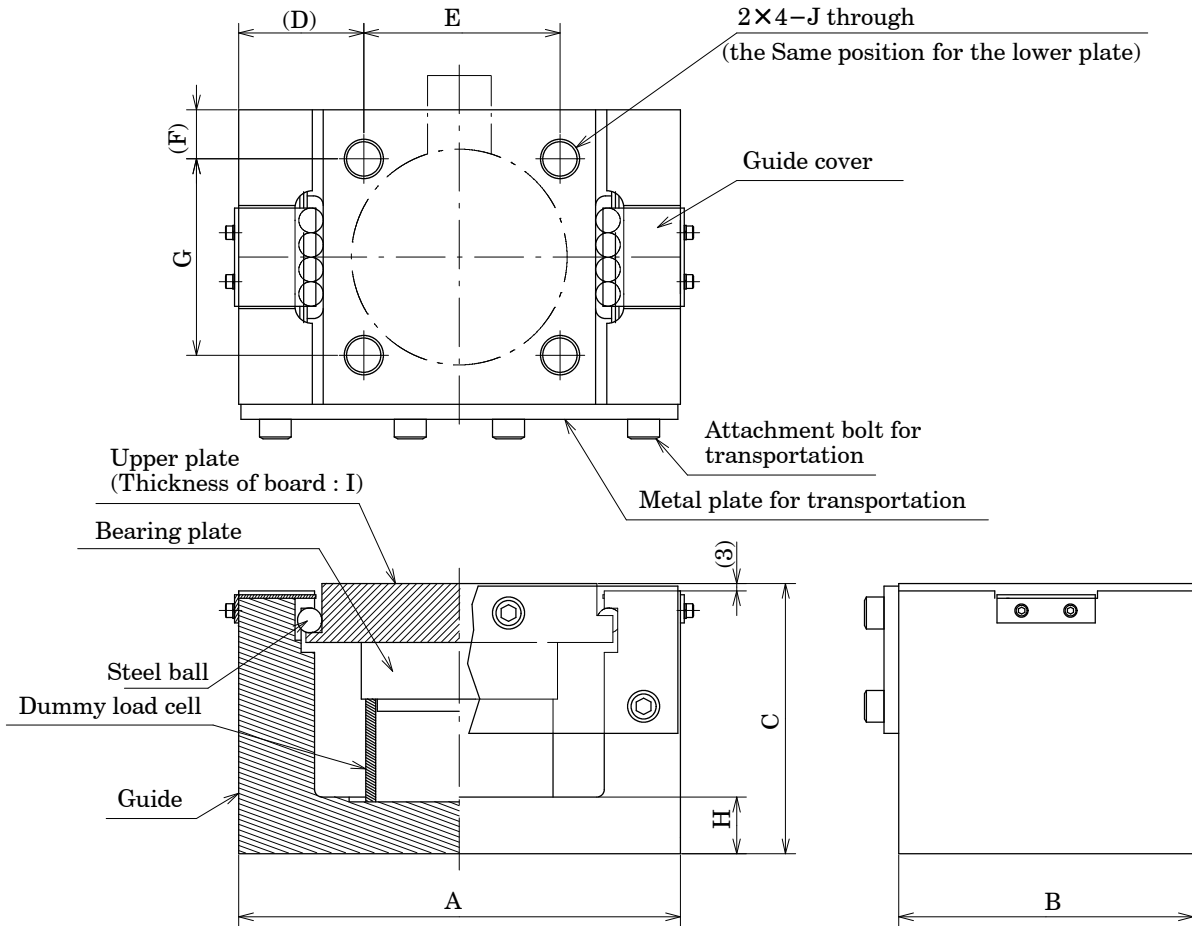
(The weight is including the load cell (Option).)

## SPECIFICATIONS

Mounting attachment with slide stop mechanism SCA-CMM1-※/SCA-CMP1-※(-S)

SPEC.No.EN216074-C

4/4



Unit : mm

Outline dimension table

P/N	Applicable load cell	A	B	C	D	E	F	G	H	I	J	Weight (Approx. kg)
SCA-CMP1-250K/5T	CMP1-250K~5T	180	120	110	50	80	20	80	23	24	M16	15
SCA-CMP1-10T	CMP1-10T											16
SCA-CMP1-250K/5T-S	CMP1-250K~5T	180	140	131	50	80	20	100	26	30	M16	17
SCA-CMP1-10T-S	CMP1-10T											17
SCA-CMP1-20T-S	CMP1-20T	250	160	140	70	110	25	110	32	30	M20	29

(The weight is including the load cell (Option).)

Specifications and outline dimensions and so on which have printed may subject to change for the purpose of improvement.