

SPECIFICATION

Rocker pin type mounting attachment
with slide stop mechanism for C2B1 B-200K ~ 2T

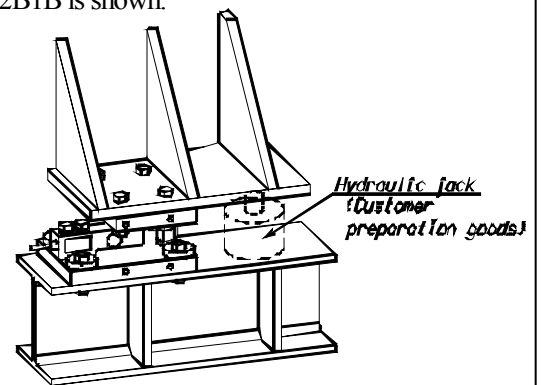
Mounting attachment with slide stop
mechanism RCA-C2B1B - -S
SPEC.No. EN216117-A 1/1

Applicable load cell : C2B1B-200K~2T
 Safe overload Note-1) : 150 %R. C. Note-2
 Allowable horizontal load : 30 %R. C.
 Allowable horizontal moving length : ± 2 mm (No directionality)
 Allowable lifting load : 19.61 kN {2 tf}
 (Fall prevention)
 Material : Equivalent to SUS304

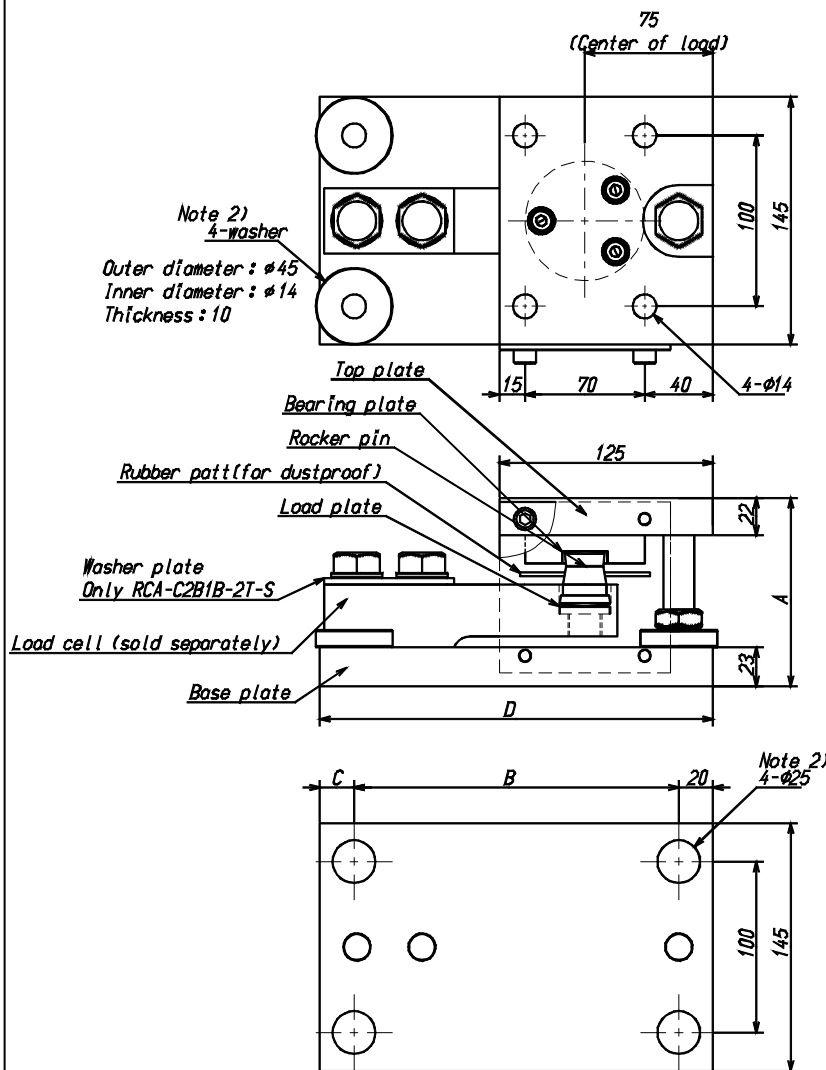
Note-1) Safe overload : An allowable overload of the C2B1B is shown.

Note-2) R.C.(RATED CAPACITY) : A rated capacity of the C2B1B is shown.

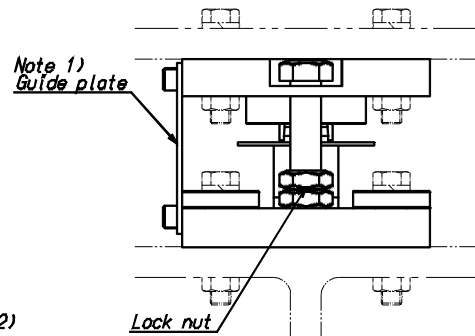
Composition	
Main body	1
Washer	4
Guide plate	1



Construction example



Outline dimensions



Note

- 1) Please remove the guide plate after the installation.
- 2) Please install the base plate by the washer.
(Recommended installation screw : M12)

P/N	Applicable load cell	A	B	C	D	Weight(Approx.kg)
RCA-C2B1B-200K/1T-S	C2B1B-200K~1T	96.6	150	25	195	9.1
RCA-C2B1B-2T-S	C2B1B-2T	110.4	190	20	230	10.1

Unit : mm

Specifications and outline dimensions and so on which have printed may subject to change for the purpose of improvement.