

SPECEFICATIONS

Mounting attachment with slide stop mechanism FCA-CMM1/CMP1- -S

SPEC.No.EN216072-C

1/3

Flexible stop method

mounting attachment with slide stop mechanism

for CMM1-50K ~ 2T/CMP1-250K ~ 10T

P/N	: FCA-CMM1-50K/2T-S, FCA-CMP1-250K/2T-S
Applicable load cell	: CMM1-50K ~ 2T (FCA-CMM1-50K/2T-S) CMP1-250K ~ 2T (FCA-CMP1-250K/2T-S)
Allowable horizontal load	: ± 11.77 kN {1 200 kgf}
Allowable horizontal moving length	: ± 10 mm
Material	: Equivalent to SUS304(Rod end is stainless painting.)
Weigit	: Approx.8 kg
Accessories	: Attachment 1 piece Hexagon socket head cap screws(M5 × L6) 4 pieces Hexagon socket head cap screws(M6 × L6) 3 pieces Bearing plate 1 piece Guide plate 2 pieces Instruction manual 1 piece (: Attached only for FCA-CMM1-50K/2T-S)
Optional products	: Dummy load cell P/N : FCAD-CMM1-50K/2T, FCAD-CMP1-250K/2T Welding plate P/N : FCAW-CMM1-50K/2T(-S), FCAW-CMP1-250K/2T(-S) Check rod to prevent the floating P/N : FCAR-CMM1-50K/2T-S, FCAR-CMP1-250K/2T-S
P/N	: FCA-CMP1-5T-S
Applicable load cell	: CMP1-5T
Allowable horizontal load	: ± 29.42 kN {3 tf}
Allowable horizontal moving length	: ± 10 mm
Material	: Equivalent to SUS304(Rod end is stainless painting.)
Weigit	: Approx.12 kg
Accessories	: Bearing plate 1 piece Guide plate 1 piece Hexagon socket head cap screws(M6 × L6) 3 pieces Instruction manual 1 piece
Optional products	: Dummy load cell P/N : FCAD-CMP1-5T Welding plate P/N : FCAW-CMP1-5T(-S) Check rod to prevent the floating P/N : FCAR-CMP1-5T-S
P/N	: FCA-CMP1-10T-S
Applicable load cell	: CMP1-10T
Allowable horizontal load	: ± 58.84 kN {6 tf}
Allowable horizontal moving length	: ± 10 mm
Material	: Equivalent to SUS304(Rod end is stainless painting.)
Weigit	: Approx.18 kg
Accessories	: Bearing plate 1 piece Guide plate 1 piece Hexagon socket head cap screws(M6 × L6) 3 pieces Instruction manual 1 piece
Optional products	: Dummy load cell P/N : FCAD-CMP1-10T Welding plate P/N : FCAW-CMP1-10T(-S) Check rod to prevent the floating P/N : FCAR-CMP1-10T-S

SPECEFICATIONS

Mounting attachment with slide stop mechanism FCA-CMM1/CMP1- -S

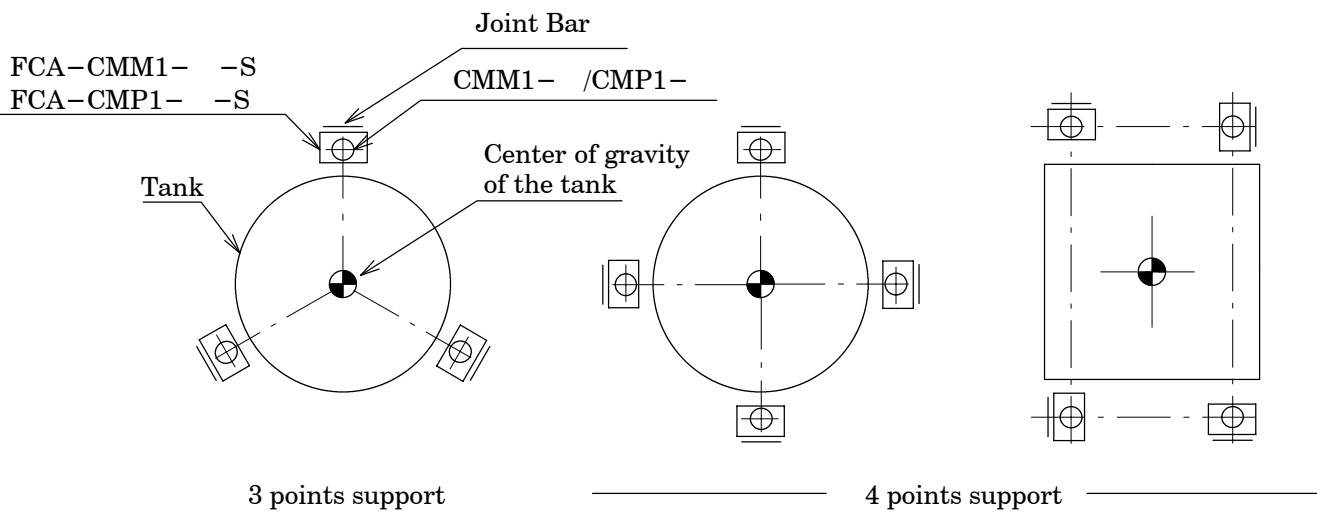
SPEC.No.EN216072-C

2/3

P/N	: FCA-CMP1-20T-S
Applicable load cell	: CMP1-20T
Allowable horizontal load	: ± 117.7 kN {12 tf}
Allowable horizontal moving length	: ± 10 mm
Material	: Equivalent to SUS304(Rod end is stainless painting.)
Weigit	: Approx.37 kg
Accessories	: Bearing plate 1 piece
	: Guide plate 1 piece
	: Hexagon socket head cap screws(M8 \times L8) 3 pieces
	: Instruction manual 1 piece
Optional products	: Dummy load cell P/N : FCAD-CMP1-20T
	: Welding plate P/N : FCAW-CMP1-20T(-S)
	: Check rod to prevent the floating P/N : FCAR-CMP1-20T-S

Remarks

- 1) Secure the space around bracket part of the tank for using the jack.
- 2) Please prepare the fall prevention mechanism separately.
- 3) Installed height recommends the vicinity of the tank center of gravity position.
- 4) Install the joint bar facing to outside.(Refer to the below drawing.)



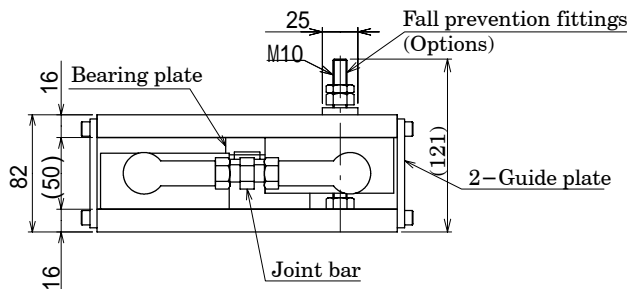
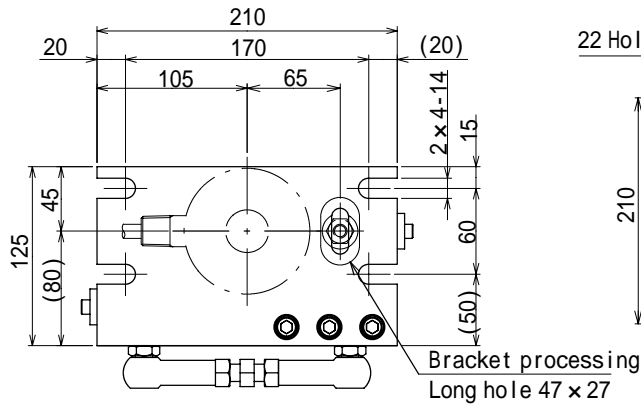
SPECIFICATIONS

- FCA-CMM1-50K/2T-S
- FCA-CMP1-250K/2T-S

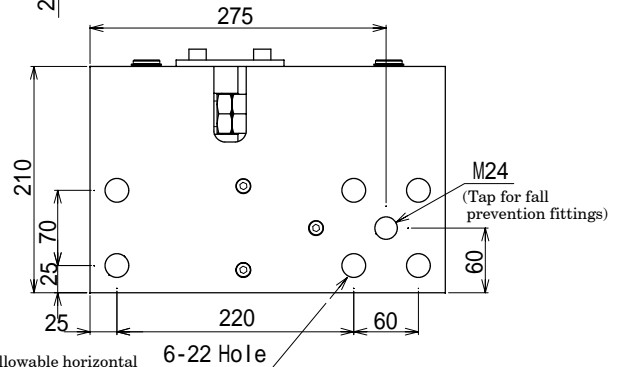
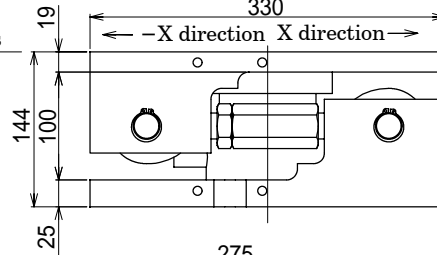
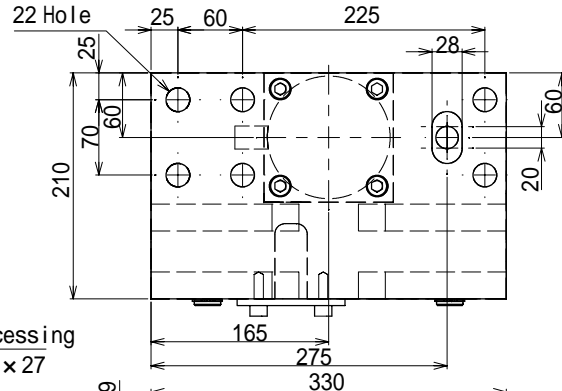
Mounting attachment with slide stop mechanism FCA-CMM1/CMP1-S

SPEC.No.EN216072-C

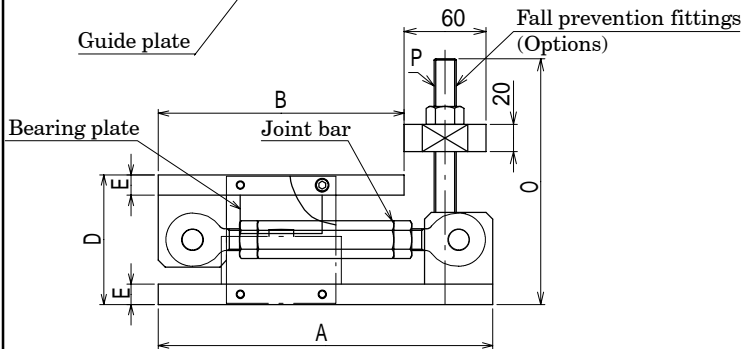
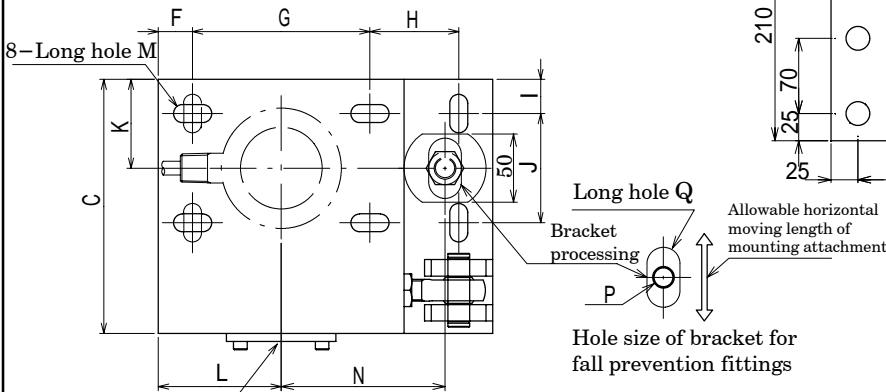
3/3



• FCA-CMP1-20T-S



- FCA-CMP1-5T-S
- FCA-CMP1-10T-S



Unit : mm

Outline dimensions

(Unit : mm)

P/N	A	B	C	D	E	F	G	H	I	J	K	L	M	N	O	P	Q	Weight(kg)
FCA-CMP1-5T-S	245	180	186	95	15	25	130	65	25	80	65	90	28 × 13	120	180	M16	44 × 24	12
FCA-CMP1-10T-S	270	200	200	115	20	30	140	70	25	80	65	100	32 × 22	120	200	M20	48 × 28	18

Specifications and outline dimensions and so on which have printed may subject to change for the purpose of improvement.