

SPECIFICATIONS

Mounting attachment with slide stop mechanism FCA-CCP1-

SPEC.No.EN216073-C

1/4

Flexible stop method
mounting attachment with slide stop mechanism
for CCP1(A)-200K ~ 20T(-U,-Z)

| | | |
|------------------------------------|----------------------------------------------------|----------|
| P/N | : FCA-CCP1-50K/100K | |
| Applicable load cell | : CCP1-50K ~ 100K | |
| Allowable horizontal load | : $\pm 5.884 \text{ kN}$ { $\pm 600 \text{ kgf}$ } | |
| Allowable horizontal moving length | : $\pm 10 \text{ mm}$ | |
| Surface treatment | : Plating (Material : SS400 or equivalent) | |
| Weigit | : Approx.7 kg | |
| Accessories | : Bearing plate | 1 piece |
| | Pin for load cell | 1 piece |
| | Guide plate | 2 pieces |
| | Instruction manual | 1 piece |
| | | |
| P/N | : FCA-CCP1-200K/1T | |
| Applicable load cell | : CCP1(A)-200K ~ 1T(-U,-Z) | |
| Allowable horizontal load | : $\pm 5.884 \text{ kN}$ { $\pm 600 \text{ kgf}$ } | |
| Allowable horizontal moving length | : $\pm 10 \text{ mm}$ | |
| Surface treatment | : Plating (Material : SS400 or equivalent) | |
| Weigit | : Approx.7 kg | |
| Accessories | : Bearing plate | 1 piece |
| | Pin for load cell | 1 piece |
| | Guide plate | 2 pieces |
| | Instruction manual | 1 piece |
| Optional products | : Dummy load cell (P/N : FCAD-CCP1-200K/1T) | |
| P/N | : FCA-CCP1-2T/5T | |
| Applicable load cell | : CCP1-2T ~ 5T(-U,-Z) | |
| Allowable horizontal load | : $\pm 29.42 \text{ kN}$ { $\pm 3 \text{ tf}$ } | |
| Allowable horizontal moving length | : $\pm 10 \text{ mm}$ | |
| Surface treatment | : Plating (Material : SS400 or equivalent) | |
| Weigit | : Approx.16 kg | |
| Accessories | : Bearing plate | 1 piece |
| | Pin for load cell | 1 piece |
| | Guide plate | 2 pieces |
| | Instruction manual | 1 piece |
| Optional products | : Dummy load cell (P/N : FCAD-CCP1-2T/5T) | |
| P/N | : FCA-CCP1-10T | |
| Applicable load cell | : CCP1-10T(-U,-Z) | |
| Allowable horizontal load | : $\pm 58.84 \text{ kN}$ { $\pm 6 \text{ tf}$ } | |
| Allowable horizontal moving length | : $\pm 10 \text{ mm}$ | |
| Surface treatment | : Plating (Material : SS400 or equivalent) | |
| Weigit | : Approx.27 kg | |
| Accessories | : Bearing plate | 1 piece |
| | Pin for load cell | 1 piece |
| | Guide plate | 1 piece |
| | Instruction manual | 1 piece |
| Optional products | : Dummy load cell (P/N : FCAD-CCP1-10T) | |

SPECIFICATIONS

Mounting attachment with slide stop mechanism FCA-CCP1-

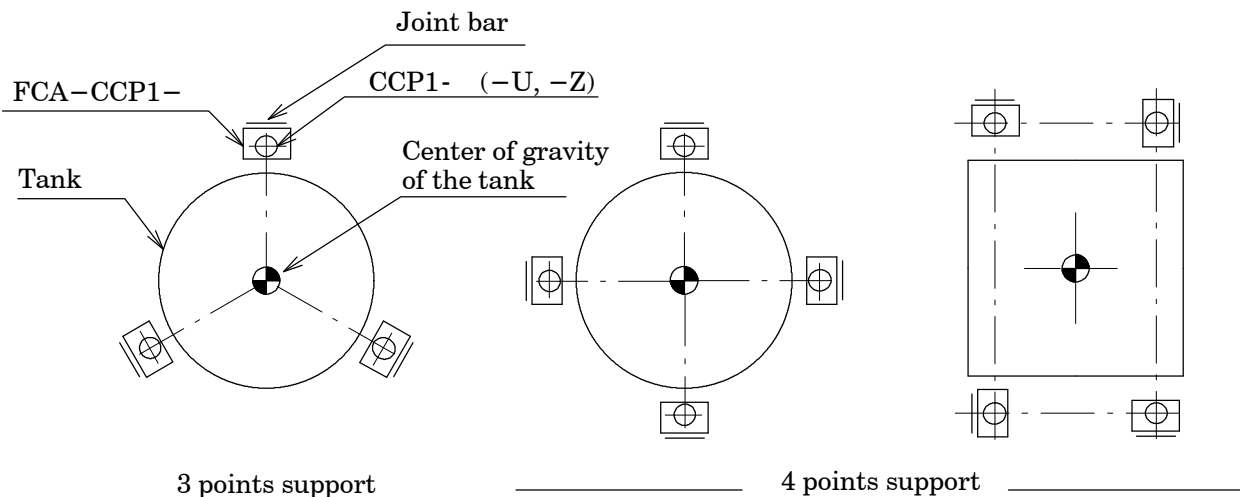
SPEC.No.EN216073-C

2/4

| | | |
|------------------------------------|--------------------------------------------------|---------|
| P/N | : FCA-CCP1-20T | |
| Applicable load cell | : CCP1-20T(-U,-Z) | |
| Allowable horizontal load | : $\pm 117.7 \text{ kN}$ { $\pm 12 \text{ tf}$ } | |
| Allowable horizontal moving length | : $\pm 10 \text{ mm}$ | |
| Surface treatment | : Plating (Material : SS400 or equivalent) | |
| Weight | : Approx.80 kg | |
| Accessories | : Bearing plate | 1 piece |
| | Pin for load cell | 1 piece |
| | Guide plate | 1 piece |
| | Instruction manual | 1 piece |
| Optional products | : Dummy load cell (P/N : FCAD-CCP1-20T) | |

Remarks

- 1) Secure the space around bracket part of the tank for using the jack.
- 2) Please prepare the fall prevention mechanism separately.
- 3) Installed height recommends the vicinity of the tank center of gravity position.
- 4) Install the joint bar facing to outside.(Refer to the below drawing.)



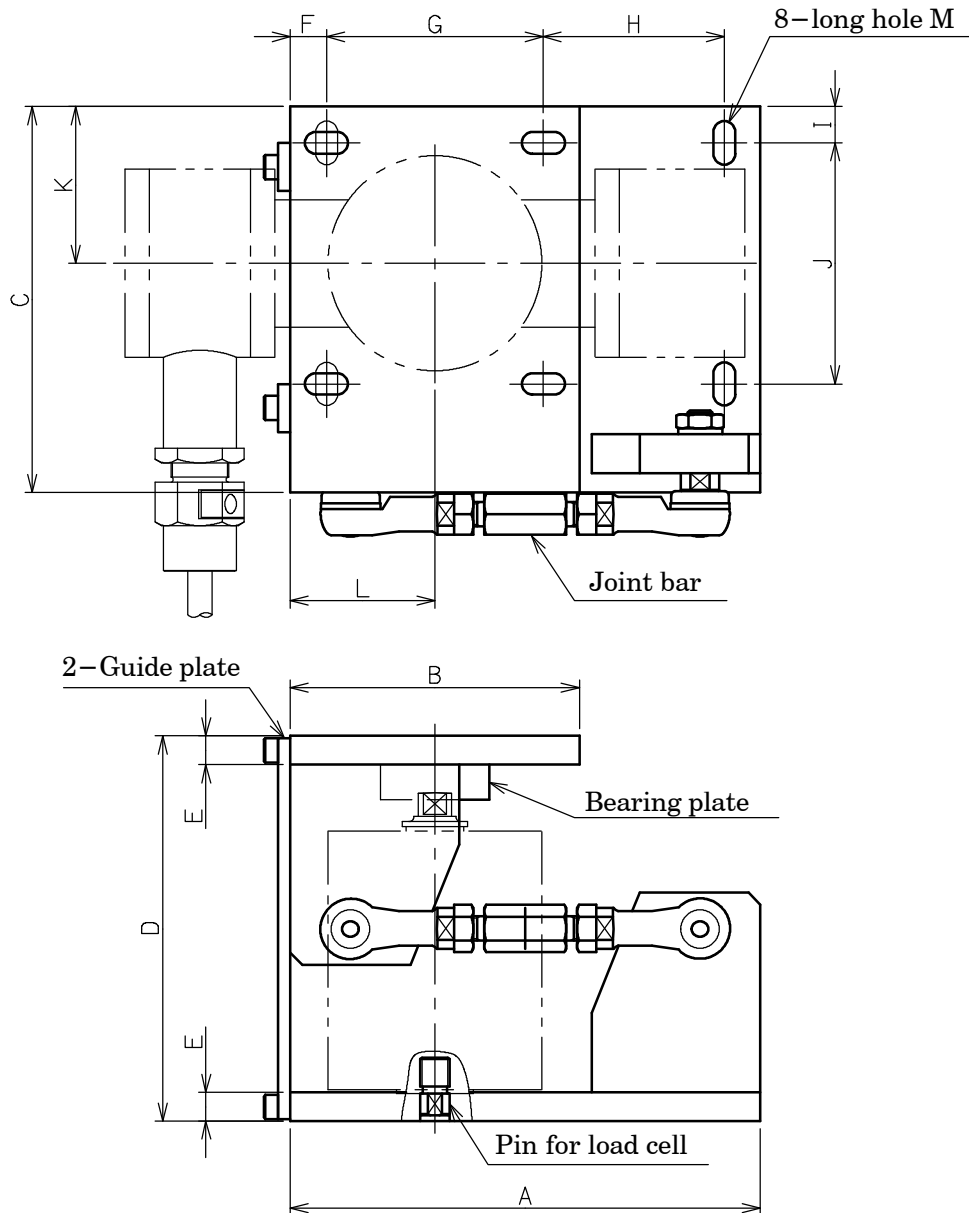
SPECIFICATIONS

Mounting attachment with slide stop mechanism FCA-CCP1-

SPEC.No.EN216073-C

3/4

- FCA-CCP1-50K/100K
- FCA-CCP1-200K/1T
- FCA-CCP1-2T/5T



Unit : mm

Outline dimensions

Unit : mm

| P/N | Applicable load cell | A | B | C | D | E | F | G | H | I | J | K | L | M |
|-------------------|--------------------------|-----|-----|-----|-----|----|----|-----|-----|----|-----|----|----|---------|
| FCA-CCP1-50K/100K | CCP1-50K ~ 100K | 195 | 120 | 160 | 160 | 12 | 15 | 90 | 75 | 15 | 100 | 65 | 60 | 18 × 9 |
| FCA-CCP1-200K/1T | CCP1(A)-200K ~ 1T(-U,-Z) | 195 | 120 | 160 | 160 | 12 | 15 | 90 | 75 | 15 | 100 | 65 | 60 | 18 × 9 |
| FCA-CCP1-2T/5T | CCP1-2T,3T,5T(-U,-Z) | 280 | 150 | 200 | 217 | 16 | 25 | 100 | 130 | 25 | 100 | 75 | 75 | 28 × 13 |

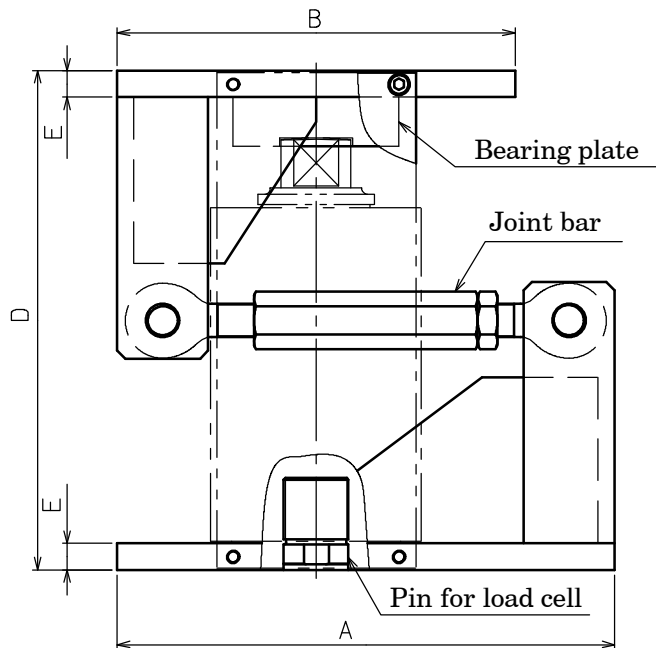
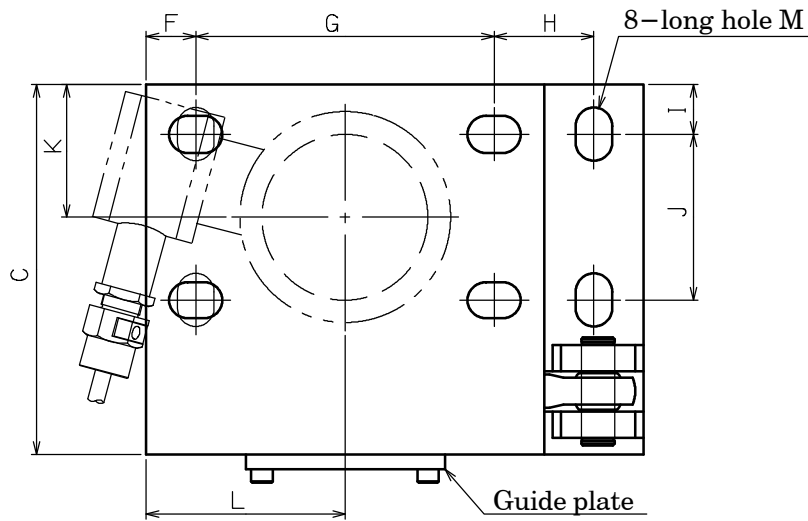
SPECIFICATIONS

Mounting attachment with slide stop mechanism FCA-CCP1-

SPEC.No.EN216073-C

4/4

• FCA-CCP1-10T



Unit : mm

Outline dimensions

Unit : mm

| P/N | Applicable load cell | A | B | C | D | E | F | G | H | I | J | K | L | M |
|--------------|----------------------|-----|-----|-----|-------|----|----|-----|----|----|-----|-----|-----|---------|
| FCA-CCP1-10T | CCP1-10T(-U, -Z) | 300 | 240 | 223 | 301 | 16 | 30 | 180 | 60 | 30 | 100 | 80 | 120 | 32 × 22 |
| FCA-CCP1-20T | CCP1-20T(-U, -Z) | 400 | 320 | 300 | 402.5 | 28 | 50 | 220 | 80 | 40 | 120 | 100 | 160 | 42 × 22 |

Specifications and outline dimensions and so on which have printed may subject to change for the purpose of improvement.