

SPECIFICATIONS

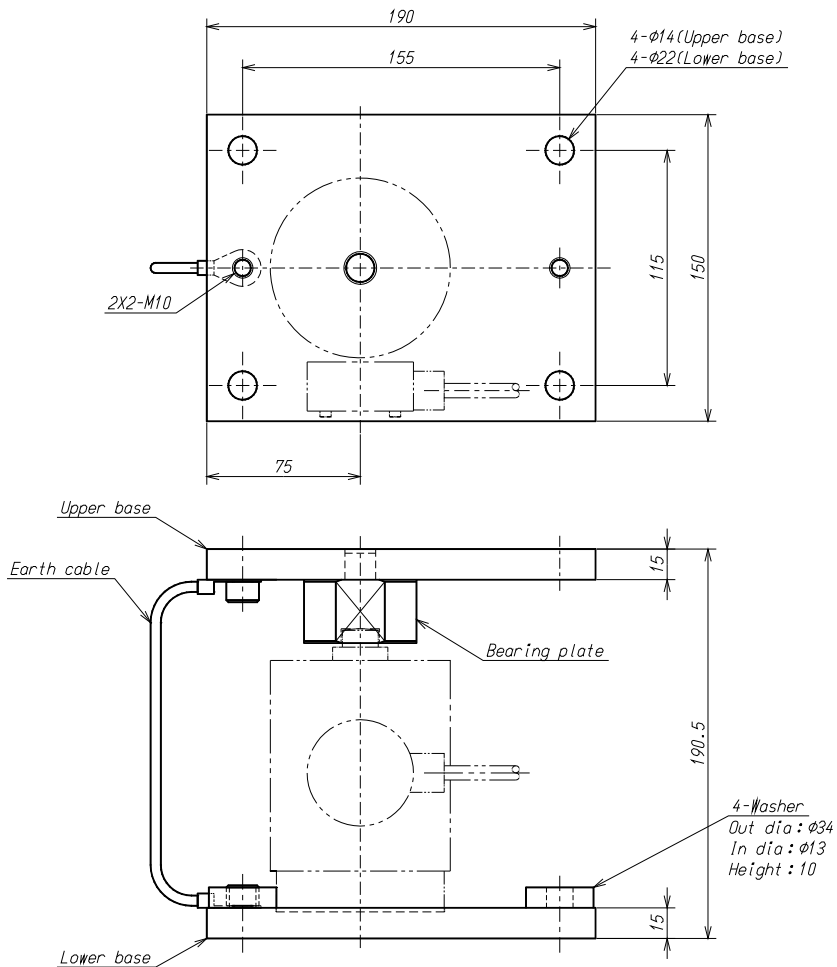
Mounting attachment for CC010
 AIC-035-※-S

● P/N :

Mounting attachment P/N	Applicable load cell
AIC-035-500K/1T-S	CC010-500K
	CC010-1T
AIC-035-2T/3T-S	CC010-2T
	CC010-3T
AIC-035-5T/30T-S	CC010-5T
	CC010-10T
	CC010-20T
	CC010-30T
AIC-035-50T-S	CC010-50T

- Materials : SS400 or equivalent
- Weight : Approx. 7.3 kg
- Accessories : Hexagon socket head cap screw M10 x 15 2 pieces
 Earth cable 1 pieces
 Washer 4 pieces

* Install the lower base with the attached washers together.



Unit: mm

※Specifications and outline dimensions and so on which have printed may subject to change for the purpose of improvement.