

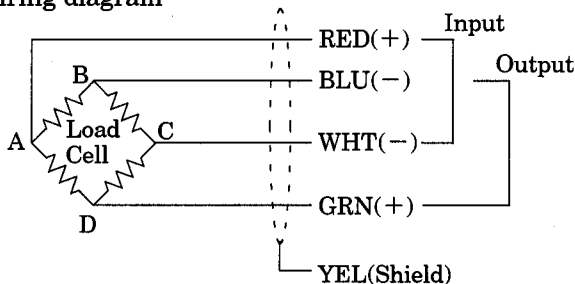
SPECIFICATIONS

Compression Type Load Cell with High Overload Capacity

- Performance
 - Rated capacity : 4.903 kN{500 kgf}~196.1 kN{20 tf}
 - Safe overload : 500 %R.C.
 - Ultimate overload : 500 %R.C.
 - Rated output : 2 mV/V±0.008 mV/V
 - Non-linearity : 0.2 %R.O.
 - Hysteresis : 0.1 %R.O.
 - Repeatability : 0.1 %R.O.
- Electrical
 - Excitation, recommended : 12 V or less
 - Excitation, maximum : 20 V
 - Zero balance : ±0.02 mV/V
 - Input resistance : 350 Ω±3.5 Ω
 - Output resistance : 350 Ω±5 Ω
 - Insulation resistance : 2 000 MΩ or more(DC 50 V)
(between bridge and main body)
- Temperature
 - Temperature range, compensated : -10 °C to 70 °C
 - Temperature range, safe : -20 °C to 100 °C
 - Temperature effect on zero balance : 0.05 %R.O./10 °C
 - Temperature effect on output : 0.1 %LOAD/10 °C
- Cable : φ 10, 4-cores shielded 3 m cable directly attached,
Y-crimp type terminal lugs are attached at cable end.
- Class of protection : Equivalent to IP64 (Main body only)
- Materials of element : Alloy steel
- Paint : Painted by epoxy resin
(Munsell 6GY3.5/2 half-polished resemblance color)
- Durability : 10⁶ times with rated load applied.

Note) R.O. means Rated Output. R.C means Rated Capacity.
Polarity of output will become plus(+) when the direction of compression load is applied.
If polarity change is required, change with wiring of blue and green(OUTPUT).

Wiring diagram



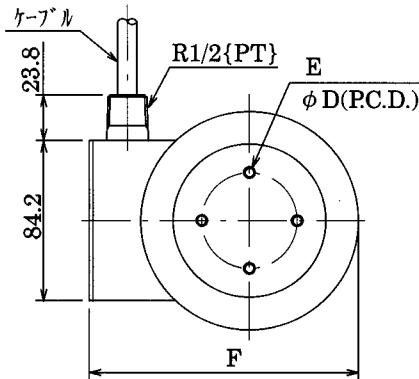
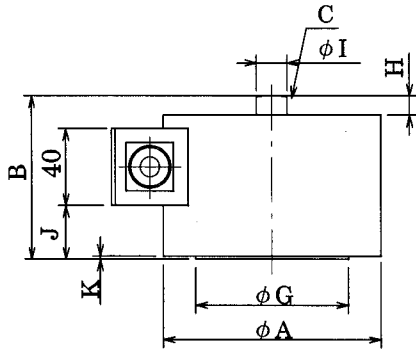
Composition	
Main body	1
Inspection data sheet	1
Instruction manual	1

SPECIFICATIONS

Load Cell
CCR1B-500K~2T/CCR1-5T~20T

SPEC.No.EN211301

2/3



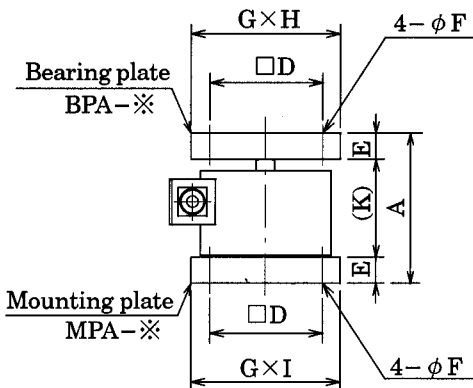
Outline dimension table

Unit : mm

P/N	Rated Capacity	φ A	B	C	φ D	E	F	φ G
CCR1B-500K	4.903 kN{500 kgf}	114	85	SR50	50	4-M6 depth 10	141	80
CCR1B-1T	9.807 kN{1 tf}							
CCR1B-2T	19.61 kN{2 tf}							
CCR1-5T	49.03 kN{5 tf}	140	110	SR100	60	4-M8 depth 15	166	100
CCR1-10T	98.07 kN{10 tf}							
CCR1-20T	196.1 kN{20 tf}							

P/N	H	φ I	J	K	Rated displacement	Natural frequency(Hz)	Weight (Approx.kg)
CCR1B-500K	10	16	28	1.5	0.04	4 000	4
CCR1B-1T					0.05	4 600	
CCR1B-2T					0.10	4 700	
CCR1-5T	15	35	43	1.5	0.09	3 500	8
CCR1-10T					0.14	4 000	
CCR1-20T	20	45	69	2.5	0.17	3 500	14

Bearing and Mounting plate attached



Composition

Main body	1
Bearing plate(BPA-※)	1
Mounting plate(MPA-※)	1
Bolt for installation of load cell (Accessory of MPA)	4

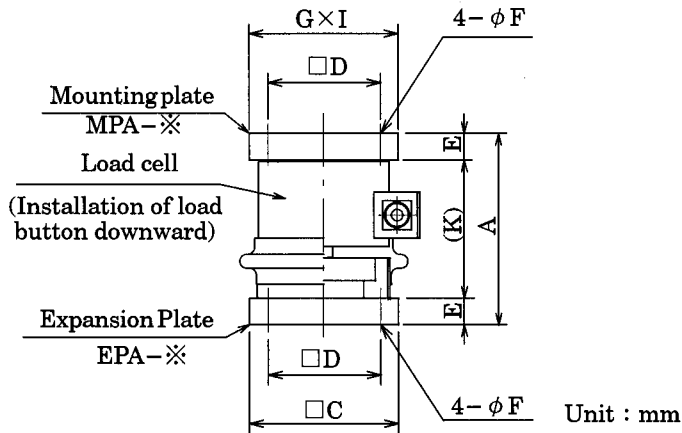
Outline dimension table

Unit : mm

P/N	P/N for accessory (Options)	A	□D	E	φ F	G	H	I	K	Weight (Approx.kg)
CCR1B-500K	BPA-3-B MPA-3-B	131	105	23	12	130	128	130	85	10
CCR1B-1T										
CCR1B-2T										
CCR1-5T	BPA-4-B MPA-4-B	170	125	30	14	160	153	155	110	20
CCR1-10T										
CCR1-20T	BPA-6-B MPA-6-B	205	150	30	14	200	200	185	145	32

The load cell may touch to either side of bearing plate as far as both sides of bearing plate have curved their P/N on them. In case of bearing plate whose touching side is curved, locate the load cell to the center of bearing plate where the P/N has curved.

Expansion and Mounting plate attached



Composition	
Main body	1
Expansion plate(EPA-※)	1
Mounting plate(MPA-※)	1
Bolt for installation of load cell (Accessory of MPA)	1

Outline dimension table

Unit : mm

P/N	P/N for accessory (Options)	A	□C	□D	E	φF	G	I	K	Expansion limit	Weight (Approx.kg)
CCR1B-500K	MPA-3-B	166	130	105	23	12	130	130	120	±8	12
CCR1B-1T	EPA-3										
CCR1B-2T											
CCR1-5T	MPA-4-B	215	160	125	30	14	160	155	155	±10	24
CCR1-10T	EPA-4										
CCR1-20T	MPA-6-B	270	200	150	30	14	200	185	210	±10	40
	EPA-6										

Specifications and outline dimensions and so on which have printed may subject to change for the purpose of Improvement without notice.