

SPECIFICATIONS

SPEC.No.EN211901-1

1/3

Explosion-proof Compression Type Load Cell

Passing No. of model authorization : No.37835
 Classification of explosive & flammability : 2G4
 Hazardous areas to be used : 1 zone and 2 zone
 Limit of temperature raise at operation : 70 (In case of operating temperature is at 40)

Load characteristics

Rated capacity : 1.961 kN{200 kgf} ~ 9.807 kN{1 tf}
 Safe overload : 150 %R.C.
 Ultimate overload : 200 %R.C.
 Rated output : 2.8 mV/V ± 0.002 8 mV/V
 Non-linearity : 0.05 %R.O.
 Hysteresis : 0.02 %R.O.
 Repeatability : 0.02 %R.O.

Electrical characteristics

Excitation, recommended : 12 V or less
 Excitation, at max : 20 V
 Zero balance : ± 0.028 mV/V
 Input resistance : 350 ± 3.5
 Output resistance : 350 ± 5
 Insulation resistance : 2 000 M or more(DC50 V)

(Between bridge and main body)

Temperature characteristics

Temperature range, compensated : - 10 to 70
 Temperature range, safe : - 20 to 100
 Temperature effect on zero balance : 0.03 %R.O./10
 Temperature effect on output : 0.03 %LOAD/10

Cable : CAB-501 should be used. (Option)
 (10 mm 6-cores shielded cable is attached.)

Class of protection : Equivalent to IP64. (Main body only)

Materials of the element : Alloy steel

Paint : Painted with epoxy resin
 (Munsell 6GY3.5/2 half-polished resemblance color)

Durability : 10⁶ times with rated load

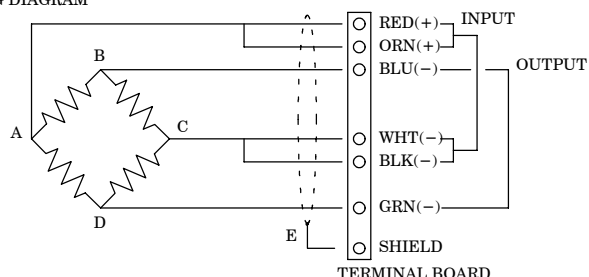
Terminal box : Fixed with solderless terminal screws on the terminal plate

Cable retracting method : Explosion-proof packing type

Piping method : Thick steel conduit tube

NOTE) R.O. indicates Rated Output and also R.C. indicates Rated Capacity. Polarity of output will become plus(+) when the direction of compression load is applied. If polarity change is required, change with wiring of blue and green(OUTPUT).

WIRING DIAGRAM



Composition

Composition	
Main Body	1
Load Buttom(LBU-)(including O-ring)	1
Inspection data	1
Crimp-type terminal lugs	7
Instruction manual for Explosion proof	1
Instruction manual	1

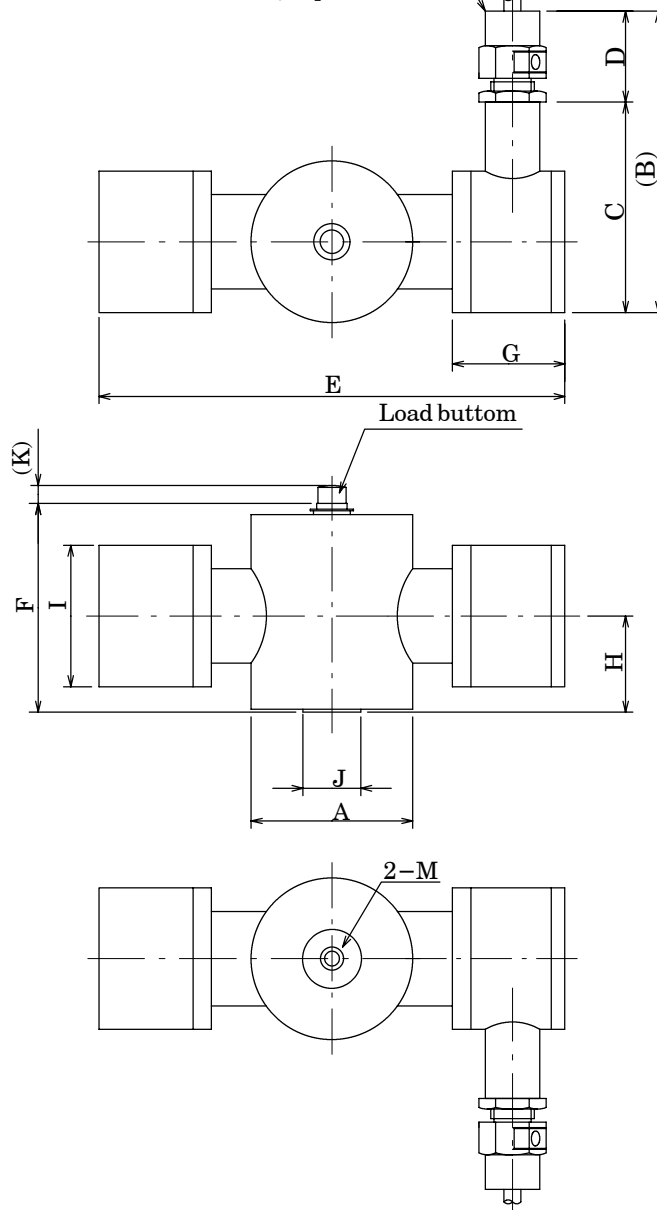
SPECIFICATIONS

Load Cell
CCP1-200K ~ 1T-Z

SPEC.No.EN211901-1

2/3

For explosion-proof metal piping
G1/2{PF} B class, depth 12



Unit : mm

Outline dimensions

P/N	Rated Capacity	A	B	C	D	E	F	G	H	I
CCP1-200K-Z	1.961 kN{200 kgf}	89	166	116	50	257	115	62	53	78
CCP1-300K-Z	2.942 kN{300 kgf}									
CCP1-500K-Z	4.903 kN{500 kgf}									
CCP1-1T-Z	9.807 kN{1 tf}									

P/N	J	K	M	Rated displacement	Natural frequency(Hz)	Weight (Approx.kg)
CCP1-200K-Z	32	10	M12 × 1.25 depth 14	0.18	1 200	5.7
CCP1-300K-Z				0.17	1 400	
CCP1-500K-Z				0.15	1 800	
CCP1-1T-Z				0.13	2 800	

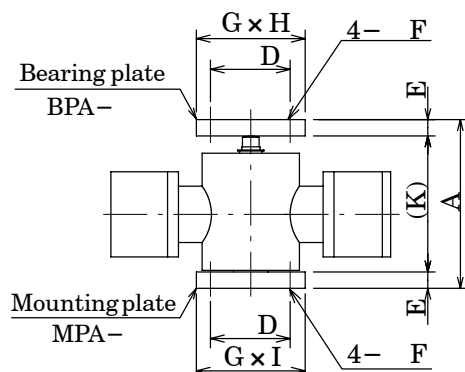
SPECIFICATIONS

Load Cell
CCP1-200K ~ 1T-Z

SPEC.No.EN211901-1

3/3

Applied bearing plate and mounting plate



Composition	
Main Body	1
Load buttom(LBU-) (Including O-ring)	1
Bearing plate(BPA-)	1
Mounting plate(MPA-)	1
Mounting bolt for load cell (Accessory of MPA)	1

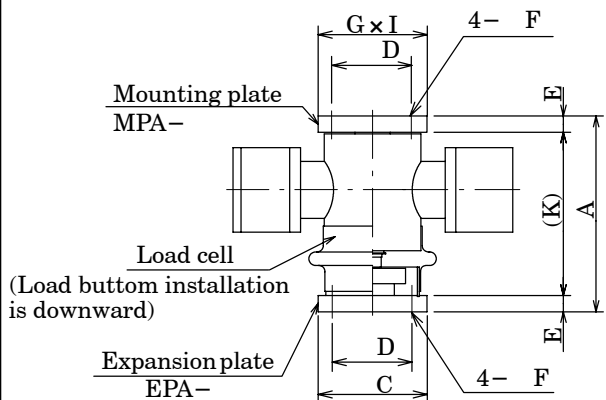
Outline dimensions

Unit : mm

P/N	P/N of accessory (Option)	A	D	E	F	G	H	I	K	Weight (Approx.kg)
CCP1-200K-Z	BPA-1-B	155	77	15	8	100	100	100	125	8.7
CCP1-300K-Z	MPA-1-B									
CCP1-500K-Z										
CCP1-1T-Z										

The load cell may touch to either side of bearing plate as far as both dies of bearing plate have curved their P/N on them. In case of bearing plate whose touching side is curved, locate the load cell to the center of the surface of bearing plate where the P/N has curved

Applied expansion plate and mounting plate



Composition	
Main body	1
Load buttom(LBU-) (Including O-ring)	1
Expansion plate(EPA-)	1
Mounting plate(MPA-)	1
Mounting bolt for load cell(MPA accessory)	1

Outline dimensions

Unit : mm

P/N	P/N of accessory (Option)	A	C	D	E	F	G	I	K	Expansion limit	Weight (Approx.kg)
CCP1-200K-Z	MPA-1-B	180	100	77	15	8	100	100	150	± 8	8.7
CCP1-300K-Z	EPA-1										
CCP1-500K-Z											
CCP1-1T-Z											

Specifications and outline dimensions and so on which have printed may suggest to change for the purpose of improvement without notice.