

SPECIFICATIONS

ELECTRONIC SCALE

LOAD CELL

CB004-10K ~ 100K

SPEC.No.EN214091-B

1/2

Performanc

Rated capacity	: 98.07 N {6 kgf} ~ 980.7 N {100 kgf}
Safe overload	: 150 %R.C.
Ultimate overload	: 200 %R.C.
Rated output	: 2 mV/V \pm 0.2 mV/V
Non-linearity	: 0.015 %R.O.
Hysteresis	: 0.015 %R.O.
Repeatability	: 0.02 %R.O.
Creep	: 0.02 %R.O./20 min
Creep recovery	: 0.02 %R.O./20 min

Electrical

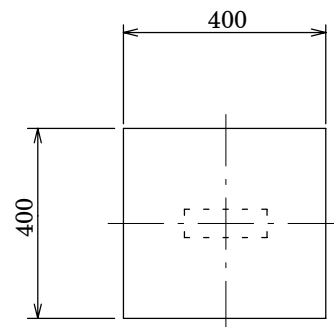
Excitation, recommended	: 12 V or less
Excitation, at maximum	: 20 V
Zero balance	: \pm 0.1 mV/V
Input resistance	: 420 $\begin{matrix} +30 \\ -20 \end{matrix}$
Output resistance	: 350 \pm 5
Insulation resistance (between bridge and main body)	: 2 000 M or more.(DC 50 V)

Temperature

Temperature range, compensated	: - 10 to 50
Temperature range, safe	: - 10 to 50
Temperature effect on zero balance	: 0.04 %R.O./10
Temperature effect on output	: 0.012 %LOAD/10

Cable : 3.2, 4-cores shielded 40 cm cable directly attached, cable ends is separated.

Maximum size of loading plate



Unit : mm

Class of protection : Equivalent to IP40(Main body only.)

Material of element : Aluminium alloy

Durability : 10^6 times with rated load applied.

Effect of eccentric load :

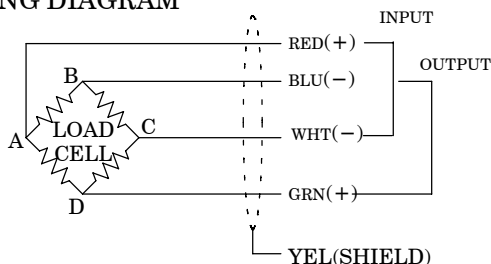
- Size of loading plate : 400 mm x 400 mm at maximum.
- The center of loading plate and also the center of load cell should be the same position.
- Error is within 0.01 %R.O. applied with 1/2 of rated capacity at the position of 100 mm of eccentricity.

Note) R.O. means Rated Output and also R.C. means Rated Capacity.

Polarity of output will become plus(+) when the direction of compression load is applied.

If polarity change is required, change wiring of blue and green.

WIRING DIAGRAM



Composition

Main body	1
-----------	---

SPECIFICATIONS

LOAD CELL
CB004-10K ~ 100K

SPEC.No.EN214091-B 2/2

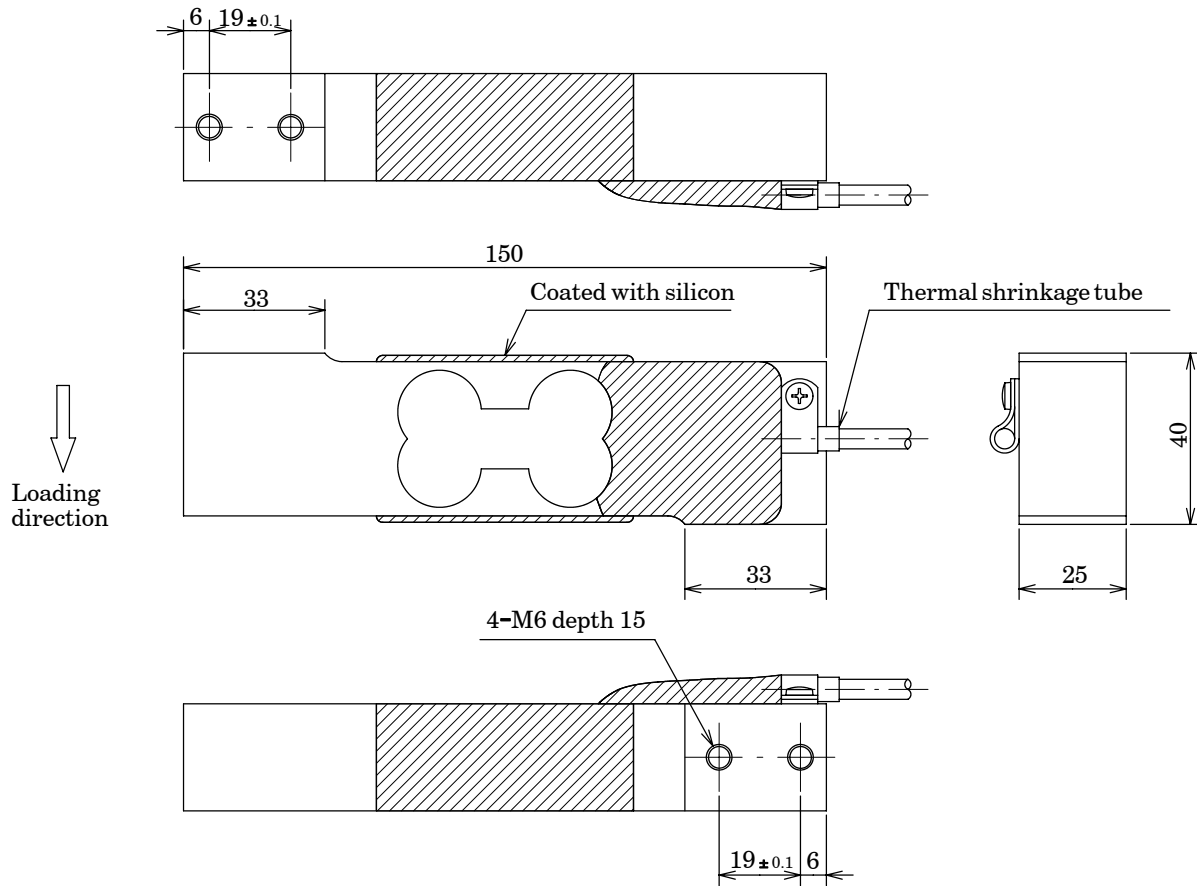


Table for P/N

Unit : mm

P/N	Rated capacity	Rated displacement	Natural frequency (Hz)	Weight (Approx. g)
CB004-10K	98.07 N {10 kgf}	0.55	160	350
CB004-15K	147.1 N {15 kgf}	0.55	200	350
CB004-20K	196.1 N {20 kgf}	0.55	230	350
CB004-25K	245.2 N {25 kgf}	0.55	250	350
CB004-30K	294.2 N {30 kgf}	0.55	270	360
CB004-35K	343.2 N {35 kgf}	0.55	300	360
CB004-45K	441.3 N {45 kgf}	0.55	330	370
CB004-60K	588.4 N {60 kgf}	0.55	380	380
CB004-100K	980.7 N {100 kgf}	0.55	480	390

Specifications and outline dimensions and so on which have printed may subject to change for the purpose of improvement without notice.