

LOADCELL TYPE C2G1-6K~50K-A

SPECIFICATIONS

●PERFORMANCE

Rated capacity(R.C.) : 58.84 N (6 kgf), 98.07 N (10 kgf),
 117.7 N (12 kgf), 147.1 N (15 kgf),
 196.1 N (20 kgf), 245.2 N (25 kgf),
 294.2 N (30 kgf), 343.2 N (35 kgf),
 490.3 N (50 kgf)

Safe overload : 150 %R.C.
 Ultimate overload : 200 %R.C.
 Rated output(R.O.) : 2.0 mV/V±0.2 mV/V
 Non-linearity : 0.015 %R.O.
 Hysteresis : 0.015 %R.O.
 Repeatability : 0.02 %R.O.
 Creep : 0.02 %R.O./20min
 Creep recovery : 0.02 %R.O./20min

●ELECTRICAL

Recommended excitation : 12 V or less
 Maximum excitation : 20 V
 Zero balance : ±0.1 mV/V
 Input terminal resistance : 420 Ω ± 5 Ω
 Output terminal resistance : 350 Ω ± 5 Ω
 Insulation resistance (bridge-body) : 2000 MΩ or more(DC50 V)

●TEMPERATURE

Compensated temperature range : -10 °C to 50 °C
 Safe temperature range : -10 °C to 50 °C
 Temperature effect : 0.04 %R.O./10°C
 on zero balance
 Temperature effect : 0.012 %LOAD/10°C
 on output

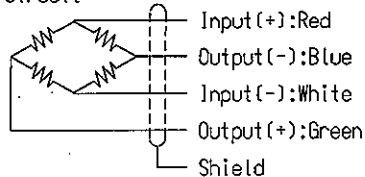
●INFLUENCE OF ECCENTRIC LOAD

Max size of the loading plate : 300 mm×300 mm
 The center of loading plate : Be sure to adjust of loading plate to the center of load cell.
 Measuring accuracy : Accuracy within 0.02 %R.O. with 1/2 of rated load applied at 75 mm from center.

●THE OTHERS

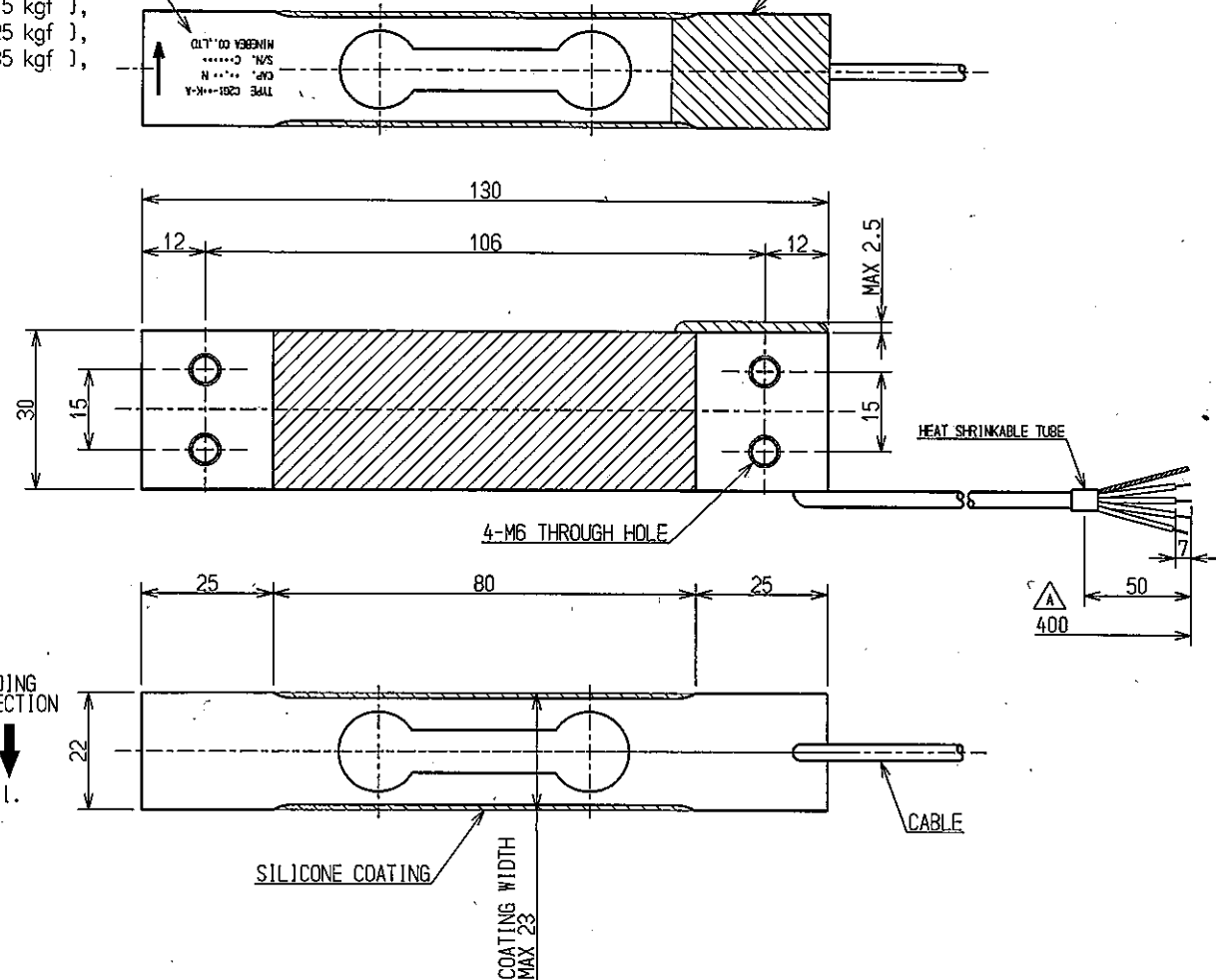
Cable : φ3.2 4core shield 40 cm \triangle
 \triangle IP level : IP64
 Material of element : ALUMINIUM ALLOY
 Weight : approx 200 g
 \triangle RoHS : Compliant

●Circuit



LAZER MARKING

SILICONE COATING



公布
K
S
T
F

株式会社 MINEBEA CO.,LTD. 計測機器事業部						単位 UNIT mm 尺碼 SCALE FREE		材質 MATERIAL 表面粗さ SURF.ROUGH.		作成日 DATE 2006.8.21 品名 DESCRIPTION OUTLINE	
APPROVED CHECKED DRAWN F. IDE A. MURAHASHI M. Onuma						一般公差 TOL 寸法 L 公差 4<L≤16 ±0.1 16<L≤63 ±0.2 63<L≤250 ±0.5 250<L≤1000 ±0.8 角度 DEG ±0.5		無処理 HEAT TREAT. 表面処理 FINISH		品番 PART NO. (MODEL NO.) C2G1-6K~50K-A 図番 DRAWING NO. KT52301-2	
行号 MARK	日付 DATE	変更事項 REASON	ECN NO.	担当 ENGINEER	承認 APPROVED			葉番 SHEET 改訂 REV. A			