

Specifications

Digital Indicator

CSD-904-EX

Spec. No. EN382904-EX-F

1/10

1 . General

This instrument is the digital indicator suitable for the platform scale system.

2 . Specifications

2 - 1 .Specifications for analog

- Bridge power supply DC5 V \pm 0.25 V within 120 mA with sensing function
- Applicable transducers Up to 8 pieces of strain gage applied transducers(350 ohm) can be connectable.
- Input sensitivity 0.2 μ V/d or more (d = minimum scale)
- Input range - 3.1 mV/V to 3.1 mV/V
- Zero adjustment range \pm 2.5 mV/V
- Non-Linearity 0.01 %F.S.
- Temperature coefficient
Zero point \pm 0.2 μ V/
Sensitivity \pm 0.001 5 %F.S./
(When the calibration is made at 0.2 μ /d or more of the input sensitivity.)
(When the calibration is made at 0.2 μ /d or more of the input sensitivity.)
- Input noise \pm 0.4 μ Vp-p or less
(At the default setting of digital filter and stabilization filter)
- Input filter Approx.1 Hz (At the default setting of digital filter and stabilization filter)
- A/D sampling 15 times/s

2 - 2 .Specification for digital

- Load display
Display range - 999 999 to 999 999
(Accumulation total display : - 1 999 999 to 9 999 999,
Accumulation times : 0 to 999 999)
- Display increment 1 (changeable to 2, 5, 10, 20 or 50.)
- Display unit 7-segment green colored fluorescent display tube with 22 mm character height
- Over display “ - OL” display at minus over, “OL” display at plus over
- AD value over display “ - OVF” display at minus over, “OVF” display at plus over
- Condition display ACCUM., MD, PT, TARE, GROSS, NET, ZERO
- Judgement display HI, OK and LO (OK : Green colored fluorescent display tube,
HI and LO : orange colored fluorescent display tube)
- Display rate 5 times/s (changeable to 15 times/s.)
- Decimal point display Changeable to no display, 10¹, 10² or 10³.
- Unit display Changeable to g, kg, t or lb. (Green colored fluorescent display tube)

Specifications

CSD-904-EX

Spec. No. EN382904-EX-F

2/10

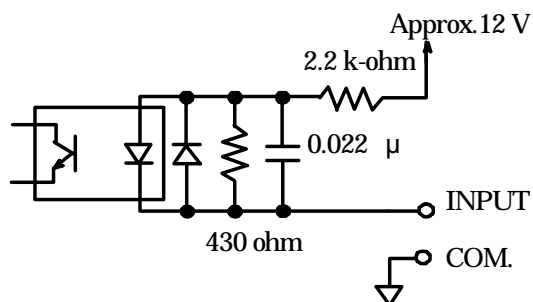
2 - 3 .Function of front panel sheet key switch

ON/OFF	Execute the light on (ON) or the light off (OFF) of display.
SET	Move to the accumulation display mode.
ACCUM./ ◀	Execute the accumulation/carry up the setting value.
PRESET TARE/ ▶	Used in setting the fixed value of the tare weight cancellation /Carry down the set value.
TARE/	Execute or clear the tare weight cancellation/set value increment.
NET/GROSS/	Changeover the display for net weight or gross weight/Decrement of set value.
ZERO	Zero compensation of gross weight.
PRINT/ ↵	Output the load data from the serial interface./Registration of set value.

2 - 4 .External control function

Seven in the followings can be selected as an optional.

- Operation of ON/OFF key
 - Operation of SET key
 - Operation of ACCUM. key
 - Operation of PRESET TARE key for the tare weight cancellation
 - Operation of TARE key for tare weight cancellation
 - Operation of NET/GROSS key for changeover of the tare weight or the gross weight
 - Operation of ZERO key
 - Operation of PRINT key for printing
- Above is pulse input, and it is effective once at the pulse width of 100 ms or more.
- Display of the net weight
 - Display of the accumulation value
- Above is level input, and it is effective during the input of short for 100 ms or more.
- Equivalent circuit of the external control input section



An internal circuit is insulated by the photocoupler.
The common and serial interface are connected.

Specifications

CSD-904-EX

Spec. No. EN382904-EX-F

3/10

2 - 5. Comparator function

This function is consisted with three patterns of "Upper/lower limit comparison mode", "Weigh-in mode" and "Weigh-out mode".

- Set value - 999 999 to 999 999
(The range of weight in/out mode is 0 to 999 999.)
- Numbers of setting 2 points of LO and HI
(4 points of target value, fall, before full and near zero for weigh-in/weigh-out mode)
- Set value of hysteresis data width 0 to 99 digit
- Direction of hysteresis Changeable to "On delay" or "Off delay"
- Conversion times of comparator Changeable to 5 times/s or 15 times/s
(Synchronous with the display times.)

The comparison signal is output from the optional contact circuit.

2 - 6. Serial interface

2-wires method serial interface

Baud rate	600 bps
Data bit length	8 bit
Parity bit	Odd number
Stop bit	1 bit
Start bit	1 bit
Transmission data	Binary code, BCD

An internal circuit is insulated by the photocoupler.

The external control input and common are connected.

2 - 7. Various function

- Zero tracking Stabilize the fluctuation of the zero point in a constant condition.
- Digital filter Data is stabilized through software in CPU.
- Stabilized filter The digital filter is reinforced and stabilized only when the width of the change of the load is constant.
- LOCK switch at real panel This switch lock the calibration function.
- Digital linearize Execute the compensation of the non-linearity by three points or less.
- Accumuration function The load data is accumulating added, and the frequency and total value are memorized.
- Fixed tare weight cancellation Execute tare weight cancellation by the set value input digitally.

3 . General specifications

- Operating temperature/humidity range
 - Temperature - 10 to 40
 - Humidity 85 %RH or less (Non condensing.)
- Power supply
 - Power supply voltage AC100 V (Permissible variable range AC85 V to AC110 V)
 - Power supply frequency 50/60 Hz
 - Power consumption Approx.4 VA (without options, at AC100 V)
Approx.10 VA (with options at AC100 V)
- Outline dimensions 192 mm(W)×96 mm(H)×165 mm(D) (excludes protruding parts)
- Dustproof waterproof specification
 - During the panel mount is installed, the front panel section becomes IP 65 or equivalent. (When the attached panel mounting gasket is installed.)
- Weight Approx.1.6 kg (without options)

Specifications

CSD-904-EX

Spec. No. EN382904-EX-F

4/10

4 . Specifications at the time of shipment

- Bridge power supply DC5 V
- Span adjustment 10 000 display at the input of 0.5 mV/V
- The minimum scale 1

5 . Accessories

- Instruction manual 1 piece
- Midget fuse (0.5 A) 1 piece
- Plug for external control input 1 piece
- Plug for connecting load cell 1 piece
- AC power cable(for AC125 V) 1 piece
- Earth adaptor 1 piece
- Plug for BCD output 1 piece (Only when optional BCD output is installed.)
- Panel mounting attachment 2 pieces
- Panel mounting gasket 1 piece

6 . Options

6 - 1 .Current output

- Parts No. CSD904-P07
- Specifications
 - Output DC4 mA to 20 mA
 - Load resistance 510 ohm or less
 - Non-linearity 0.05 %F.S.
 - Over range 'OL' display at approx. DC2.4 mA and 'OL' display at approx. DC21.6 mA.
An internal circuit is insulated by the photocoupler.

6 - 2 .Voltage output

- Parts No. CSD904-P25
- Specifications
 - Output DC0 V to 10 V
 - Load resistance 5 k-ohm or more
 - Non-linearity 0.05 %F.S.
 - Over range 'OL' display at approx. DC-1 V and 'OL' display at approx. DC11 V.
An internal circuit is insulated by photocoupler.

Specifications

CSD-904-EX

Spec. No. EN382904-EX-F

5/10

6 - 3 .BCD output

• Parts No. CSD904-P15

• Specifications

Output BCD 7 digits, parallel output
with polarity(POL) applied (Output ON with minus, and output OFF with plus.),
P.C.(Print command) Turning on during fixed time after conversion of BCD output is
completed

ERROR ON when the various errors occur.

OVER

STABLE

GROSS WEIGHT ON when the BCD output is gross weight

Above are open collector outputs. $V_{CE}=DC30\text{ V}$, $I_C=DC20\text{ mA}$ at maximum

The output is not updated, except for the measurement mode.

Input HOLD Holding the BCD output

BCD-ENABLE Compulsorily turned off of the output related with BCD. (Hi-impedance)

Above are level input, and effective during the input of short more than 100 ms.

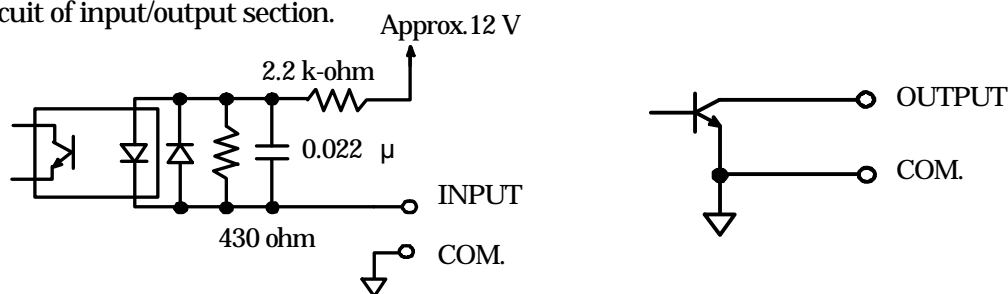
Connector pin configuration of BCD output

Suitable plug : 57-30500

1	1×10^0	18	2×10^4	35	N.C.
2	2×10^0	19	4×10^4	36	N.C.
3	4×10^0	20	8×10^4	37	N.C.
4	8×10^0	21	N.C.	38	Decimal point 10^1
5	1×10^1	22	N.C.	39	Decimal point 10^2
6	2×10^1	23	POL.	40	Decimal point 10^3
7	4×10^1	24	COM.	41	N.C.
8	8×10^1	25	ERROR	42	Stability
9	1×10^2	26	1×10^5	43	N.C.
10	2×10^2	27	2×10^5	44	Gross weight
11	4×10^2	28	4×10^5	45	BCD-ENABLE
12	8×10^2	29	8×10^5	46	OVR.
13	1×10^3	30	1×10^6	47	P.C.
14	2×10^3	31	2×10^6	48	P.C.
15	4×10^3	32	4×10^6	49	HOLD
16	8×10^3	33	8×10^6	50	COM.
17	1×10^4	34	N.C.		

Don't connect with N.C. pin.

• Equivalent circuit of input/output section.



An internal circuit and photocoupler are insulated.

The external control input and common are connected.

Specifications

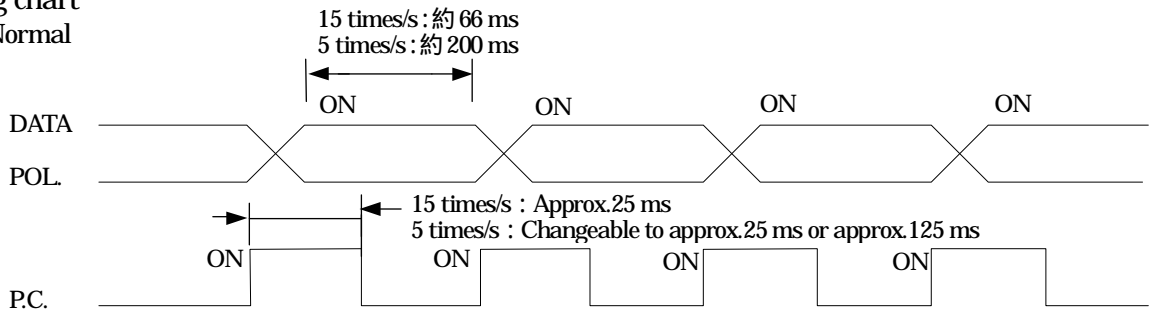
CSD-904-EX

Spec. No. EN382904-EX-F

6/10

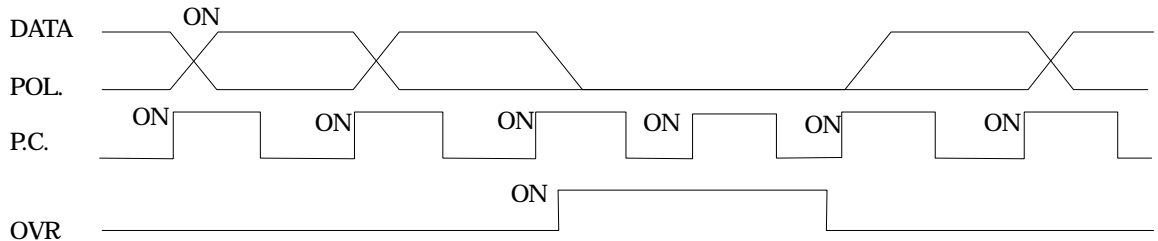
• Timing chart

Normal



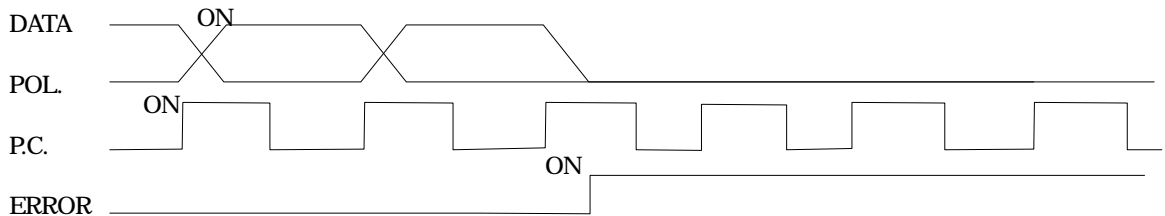
Output transistor becomes ON (Negative logic in electrical theory) when all of the P.C., DATA and POL output the data.

When data is over.



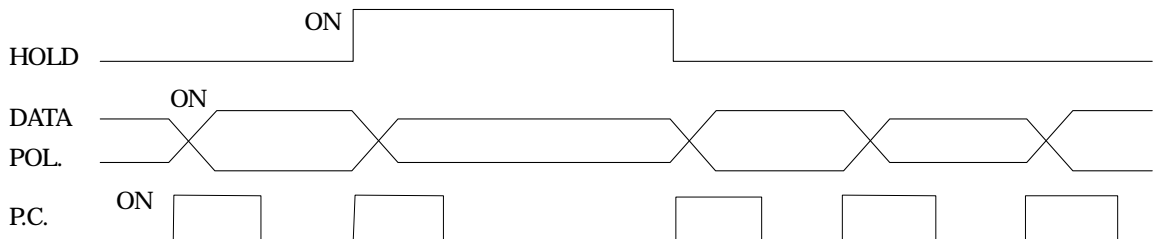
Output transistor of OVR signal becomes ON (Negative logic in electrical theory) during the output of OVR. Moreover, output transistor of all of the DATA becomes OFF (Positive logic in electrical theory) during the output of OVR. POL becomes OFF during plus over, and also becomes ON during minus over

When the error is occurred.



Output transistor of ERROR signal becomes ON (Negative logic in electrical theory) during the output of ERROR. Moreover, output transistor of all the P.C., DATA and POL becomes OFF (Positive logic in electrical theory) during the output of ERROR.

When the HOLD signal is input.



Output transistor of P.C. becomes OFF (Positive logic in electrical theory) during input of HOLD signal.

However, P.C. becomes OFF after the one shot operation.

Specifications

CSD-904-EX

Spec. No. EN382904-EX-F

7/10

6 - 4 .RS-232C interface

- Parts No. CSD904-P74
- Specifications
 - Baud rate : Selectable from 1 200, 2 400, 4 800 or 9 600 bps.
 - Data bit length : Selectable from 7 bit or 8 bit
 - Parity bit : Selectable from None, Even or Odd.
 - Stop bit : Selectable from 1 bit or 2 bit
 - Terminator : Selectable from CR + LF or CR
 - Communication method : Half duplex
 - Synchronous method : Start-stop synchronous method
 - Communication data : ASCII code
 - Cable length : within 15 m

- Connector pin configuration of RS-232C Suitable plug : DE-9S-NR by JAE or equivalent.

Pin No.	Signal name
1	CD
2	TXD
3	RXD
4	N.C.
5	S.G.
6	N.C.
7	RTS
8	CTS
9	N.C.

Connector plug is not attached.

The engagement fixation stand screw is inch screw.

Don't connect with N.C. pin.

An internal circuit is insulated by photocoupler.

The external control input and common are connected.

- Function

Reading out the load.

Reading out the accumulated total value

Reading out the accumulated frequency value

Reading out the condition

(Accumulation, Stable, Fixed tare weight cancellation, Gross weight, Net weight, Zero, Unit)

Changing the condition

(Zero set, Tare weight cancellation, Tare weight cancellation clear, Accumulation, Accumulation clear, Gross weight display, Net weight display)

Reading out the comparator set value

Changing the comparator set value.

Reading out the comparator judgement.

Communication error code (error code as to the communication)

Specifications

CSD-904-EX

Spec. No. EN382904-EX-F

8/10

6 - 5 .RS-422/485 interface

- Parts No. CSD904-P76
- Specifications
 - Baud rate : Selectable from 1 200, 2 400, 4 800 or 9 600 bps.
 - Data bit length : Selectable from 7 bit or 8 bit
 - Parity bit : Selectable from None, Even or Odd.
 - Stop bit : Selectable from 1 bit or 2 bit
 - Terminator : Selectable from CR + LF or CR
 - Communication method : Half duplex
 - Synchronous method : Start-stop synchronous method
 - Address : Selectable one from 0 to 31
 - Transmission data : ASCII code
 - Cabel length : Approx. 1 km
 - Connectable unit : 32 units at the maximum(RS-422 : 10 units)
 - Termination : Internal
(Selects the presence by terminal block connection)
 - Input/output monitor with LED
 - Changeover the RS-422/485 : Set by function.

- Terminal configuration of RS-422/485

Terminal Name	Signal name
SDA	Differential output(+)
SDB	Differential output(-)
RDA	Differential input(+)
RDB	Differential input(-)
TRM	Termination
S.G.	Signal ground

An internal circuit is insulated by photocoupler.
The external control input and common are connected.

- Function
 - Reading out the load.
 - Reading out the accumulated total value
 - Reading out the accumulated frequency value
 - Reading out the condition
(Accumulation, Stable, Fixed tare weight cancellation, Tare weight cancellation, Gross weight, Net weight, Zero, Unit)
 - Changing the condition
(Zero set, Tare weight cancellation, Tare weight cancellation clear, Accumulation, Accumulation clear, Gross weight display, Net weight display)
 - Reading out the comparator set value
 - Changing the comparator set value.
 - Reading out the comparator judgement.
 - Communication error code (error code as to the communication)

Specifications

CSD-904-EX

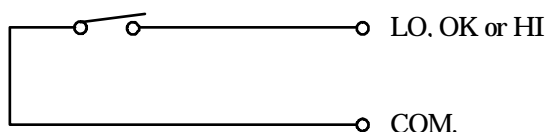
Spec. No. EN382904-EX-F

9/10

6 - 6 .Contact type output

The judgement result of the comparator is output by the contact type signal.

- P/No. CSD904-P43
- Contact type output 3 points
- Specification of contact 1a contact
AC250 V 3 A (Load resistance)
DC30 V 3 A (Load resistance)
- Equivalent circuit of the contact output section.



6 - 7 .Power supply voltage

- P/No. CSD904-P62 (AC120 V)
Power supply AC120 V (AC102 V to AC132 V) 50/60 Hz
Power consumption Approx. 10 VA at maximum (with options)
- P/No. CSD904-P63 (AC200 V)
Power supply AC200 V (AC170 V to AC220 V) 50/60 Hz
Power consumption Approx. 10 VA at maximum (with options)
Cable for 250 V power supply is not attached.
- P/No. CSD904-P65 (AC240 V)
Power supply AC240 V (AC204 V to AC264 V) 50/60 Hz
Power consumption Approx. 10 VA at maximum (with options)
Cable for 250 V power supply is not attached.

When this is used in Japan domestic, the voltage that exceeds AC125 V cannot be supplied by the limitation of "Electrical Appliance and Material Safety Law".

6 - 8 .Combination of optional products

	P07	P25	P15	P74	P76	P43
P07	-	×	×	×	×	
P25	×	-	×	×	×	
P15	×	×	-	×	×	
P74	×	×	×	-	×	
P76	×	×	×	×	-	
P43						-

P07 : Current output (4 mA to 20 mA)

P25 : Voltage output (DC0 V to 10 V)

P15 : BCD output

P74 : RS-232C interface

P76 : RS-422/485 interface

P43 : Contact type output

Specifications

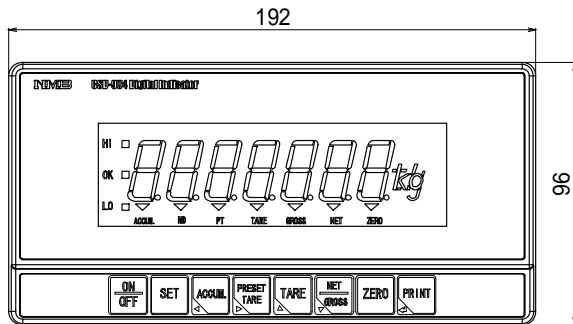
CSD-904-EX

Spec. No. EN382904-EX-F

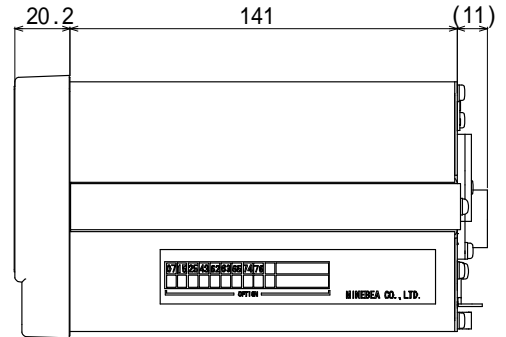
10/10

7 . Outline dimensions

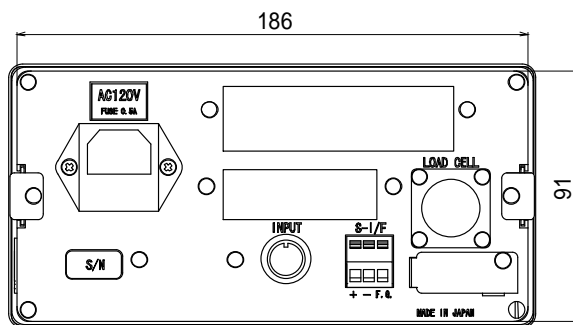
Front panel



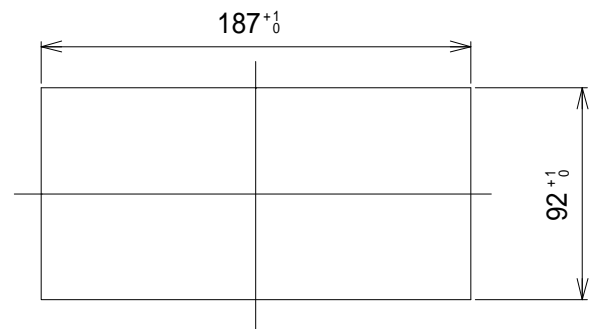
Side



Rear panel

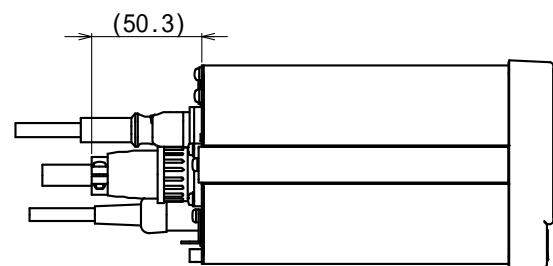
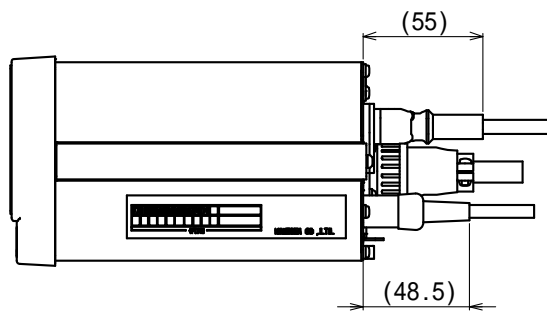


Panel cut size

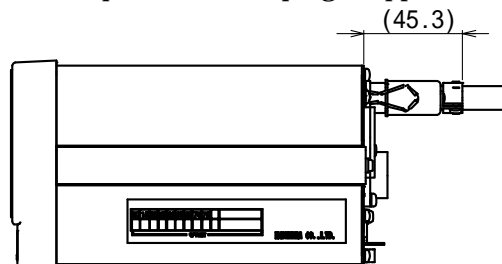


Unit : mm

Side shape when AC cable, input plug for external control or plug for connecting load cell are applied.



Side shape when BCD plug is applied



Unit : mm

Specifications and Outline dimensions and so on which have printed may subject to change for the purpose of improvement without notice.