

## SPECIFICATIONS

Explosion-proof Summing Type  
Junction Box

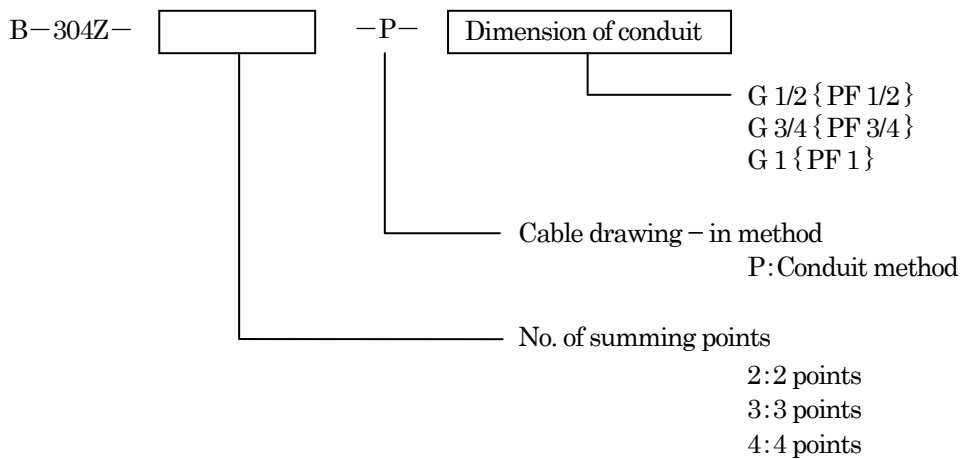
### 1. General

This instrument is applied when the summing of the signals from the explosion-proof type strain gage applied transducers is used in the dangerous area where the explosion-proof structure is required.

### 2. Specifications

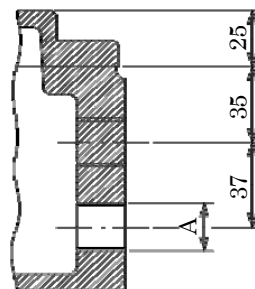
- P/No. B-304Z-\* -P
- Explosion-proof performance d2G4
- Passing No. of model authorization No.T39811
- Protection structure IP52
- Paint color Black (Epotect Tar Free Black Base by Kansai Paint Co., Ltd.)
- Weight Approx.18.5 kg

### 3. Parts No. configuration



### 4. Dimension of conduit

	Nominal of screw
Dimension of A	G 1/2 { PF 1/2 }
	G 3/4 { PF 3/4 }
	G 1 { PF 1 }



Unit: mm

### 5. Accessory

Hex-head wrench for M6 size 1 piece

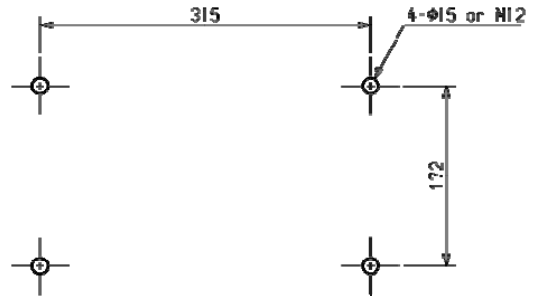
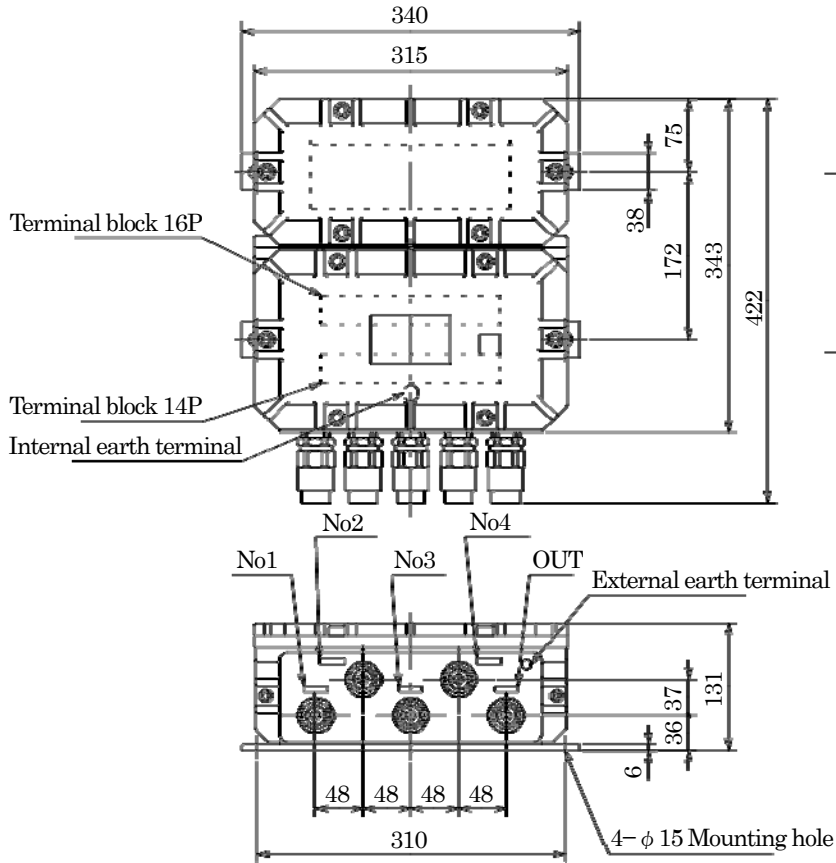
## SPECIFICATIONS

B-304Z-\* -P

Spec. No. EN353304Z-P

2/3

### 6. Outline dimensions



Mounting hole pitch

Unit : mm

## SPECIFICATIONS

B-304Z-\* -P

Spec. No. EN353304Z-P

3/3

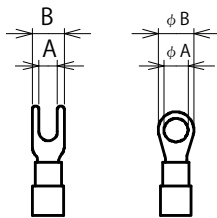
### 7. Schematics

Terminal block	Cable color	Signal name	Terminal block	Cable color	Signal name
1W to 4W	White	Input voltage(-)	RD	Red	Input voltage(+)
1R to 4R	Red	Input voltage(+)	OR	Orange	Remote sensing(+)
1G to 4G	Green	Output voltage(+)	BK	Black	Remote sensing(-)
1B to 4B	Blue	Output voltage(-)	WH	White	Input voltage(-)
1Y to 4Y		Shield	GN	Green	Output voltage(+)
			BL	Blue	Output voltage(-)
			YE		Shield

(MinebeaMitsumi standard cable color)

Applicable solderless terminal

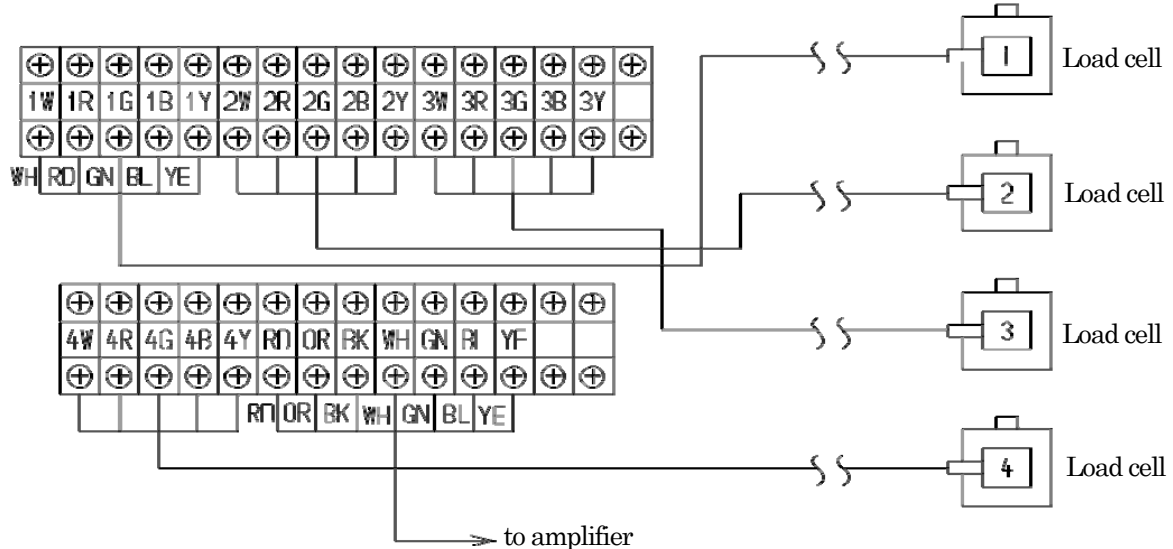
Recommended screw tightening torque 0.5 N·m



A: 3.2 mm or more  
B: 7.0 mm or less

Y type      Round type

(When using 6-cores cable, wiring orange to the same terminal of red, and black with white)



(When using 4-cores cable, wiring of orange and black is unnecessary.)

Specifications and outline dimensions and so on which have printed may subject to change for the purpose of improvement without notice.