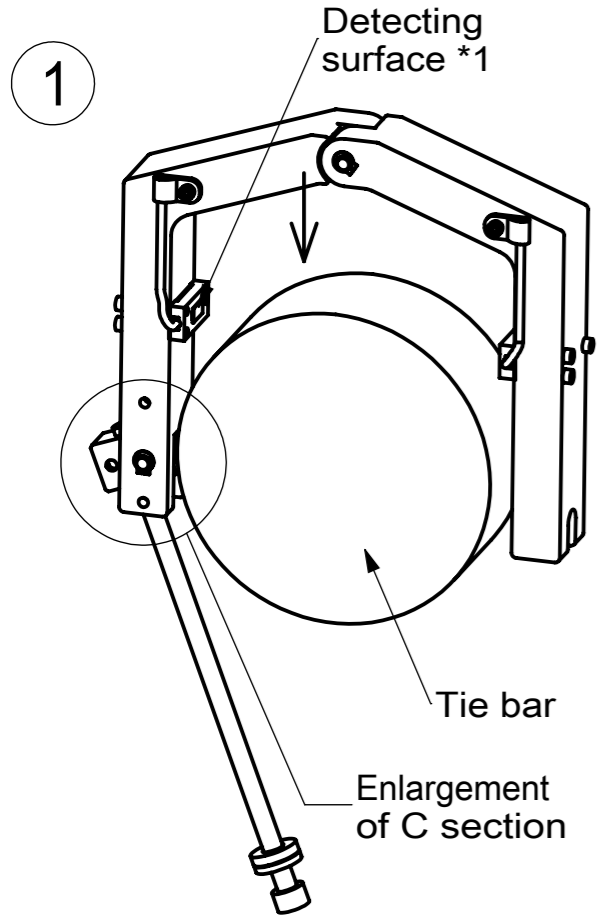


Mounting procedures for TGR-XXXF

● Mounting procedures for gage ring ●

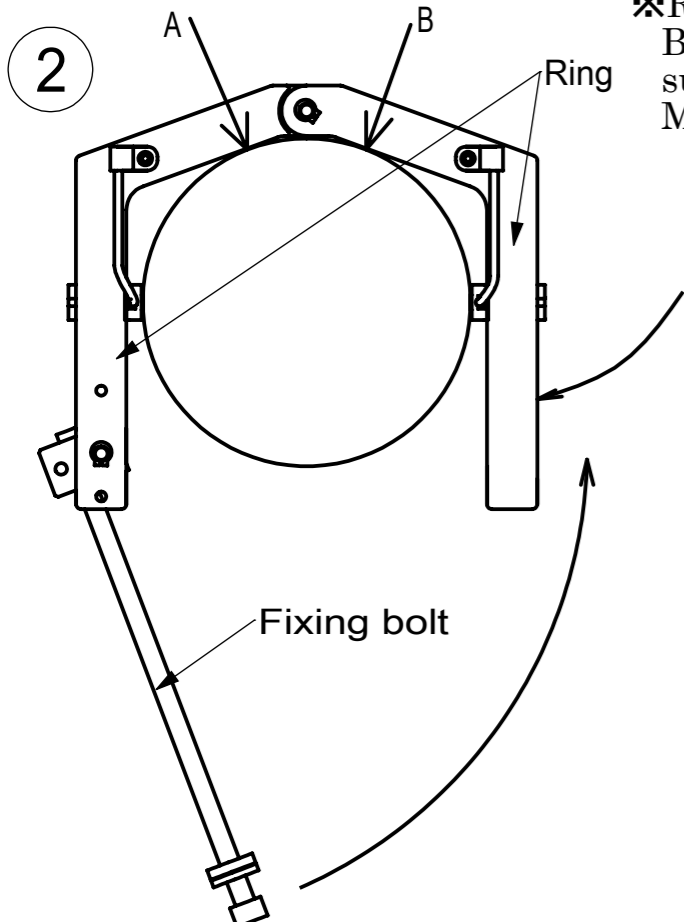


① Mount it on the tie bar.
 Open the ring and mount it on the tie bar.
 ※ Take care not to rub the detecting surface*1 of the tie bar gage.
 ※ The mounting angle should be vertical downward.
 (Refer to the below right figure.)

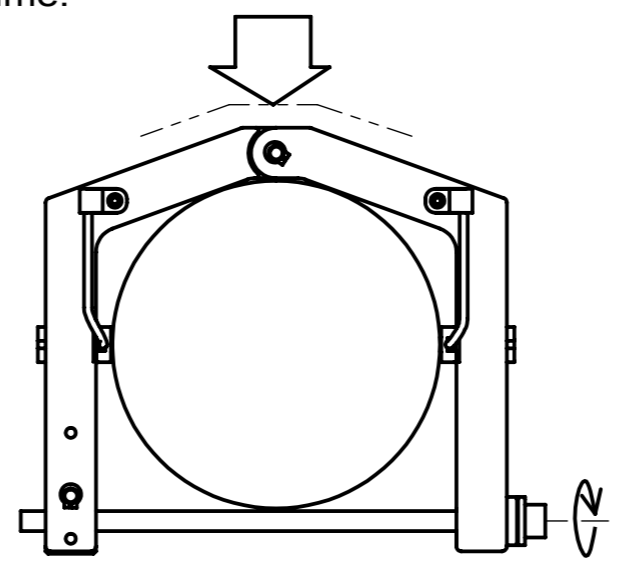
② Temporary fixing
 Close the ring.
 Close the fixing bolt.
 ※ Check that each section of A and B contacts to the tie bar.

③ Fixing
 Tightening the fixing bolt while the ring is pressed not to move.
 When the bolt comes to turn by the hand, it is tightened by the torque driver model TGR-T.
 The sound 'Cati' is heard from the torque driver when it reaches a regulated torque and it runs idle.
 Please make the idling only at one time.
 (There may cause the damage on the protection cover of the tie bar gage by repeating the idling.)
 Please confirm specifications for recommended tightening torque.
 The fixing bolt is tightened by torque driver after tightened by hand.

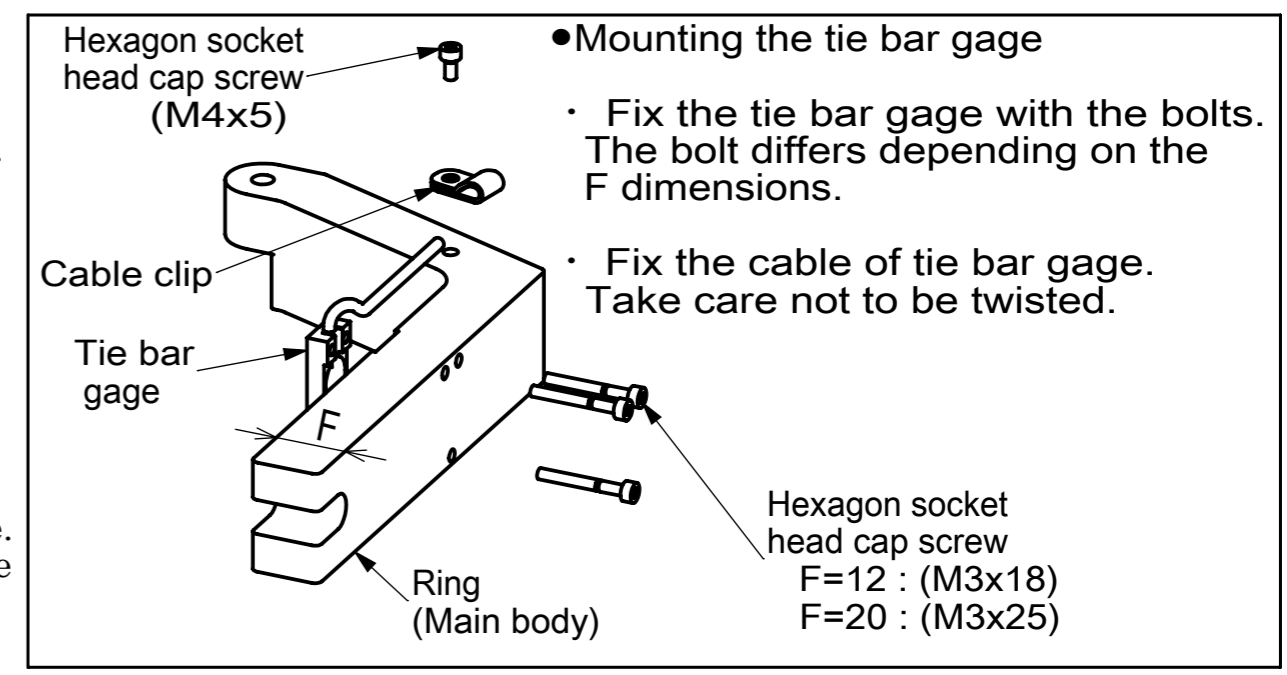
※ Remarks
 Before mounting, clean up the oil or dirt and etc., on the surface of gage mounting on the tie bar.
 Moreover, clean off the surface of the gage with alcohol and etc.



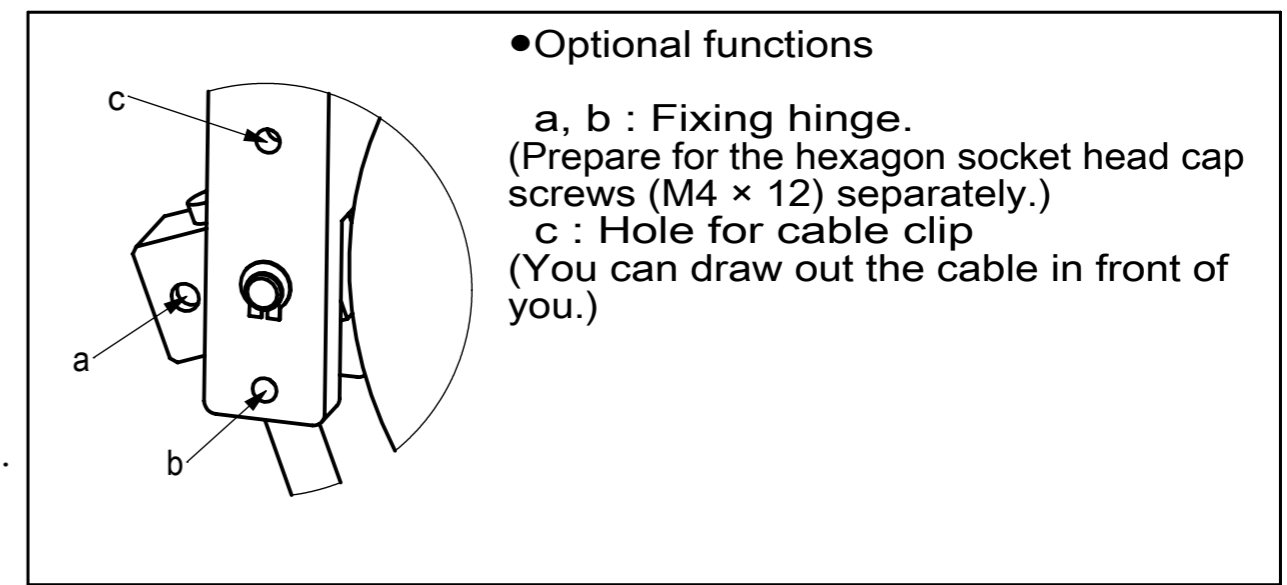
③ Clamp it up with pressure on at the same time.



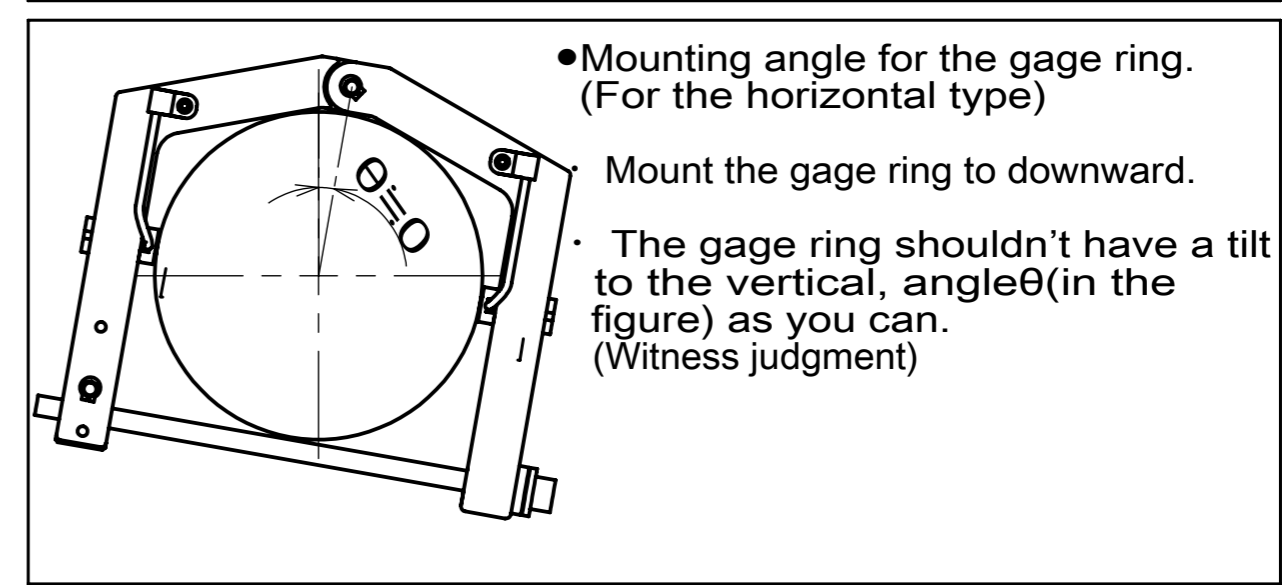
Press the ring to the tie bar and tighten the fixing bolt.



● Mounting the tie bar gage
 • Fix the tie bar gage with the bolts. The bolt differs depending on the F dimensions.
 • Fix the cable of tie bar gage. Take care not to be twisted.



● Optional functions
 a, b : Fixing hinge.
 (Prepare for the hexagon socket head cap screws (M4 × 12) separately.)
 c : Hole for cable clip
 (You can draw out the cable in front of you.)



● Mounting angle for the gage ring. (For the horizontal type)
 • Mount the gage ring to downward.
 • The gage ring shouldn't have a tilt to the vertical, angle θ (in the figure) as you can. (Witness judgment)