

Minebea

***DIGITAL CONVERSION MODULE
CSD-892-73***

USB Driver Installation Manual

Divisional history

Data	Manual NO.	Revision reason(content)
2012/06	DRW. NO. EN294-1569	First edition
2016/06	DRW. NO. EN294-1569-A	Due to ECN No, FN16-02057 -Deletion- Delete 'Minebea Co., Ltd. Measuring Components Business Unit' from the front cover. Due to ECN No, FN10-02140-E -Change- Minebea logo is changed.

Contents

1. Forword.....	1
2. Install method of drivers.....	1
3. The check method of a COM port.....	6

1. Forword

To use USB interface with connecting CSD-892-73 to Personal Computer, you need to install exclusive drivers.

This manual explains the installation method of two exclusive drivers (USB Serial Converter, USB serial Port). The installation method when OS is Windows XP is as shown in the following explanation. When you install with other OS please install according to an installation wizard's screen.

Exclusive drivers are downloadable from our homepage. Moreover, since the USB driver is enclosed by setup CD, those who purchased EzCTS (communication tool software) need to use it there.

*Drivers downloadable from our homepage correspond to Windows XP, Windows vista, and OS of Windows7.

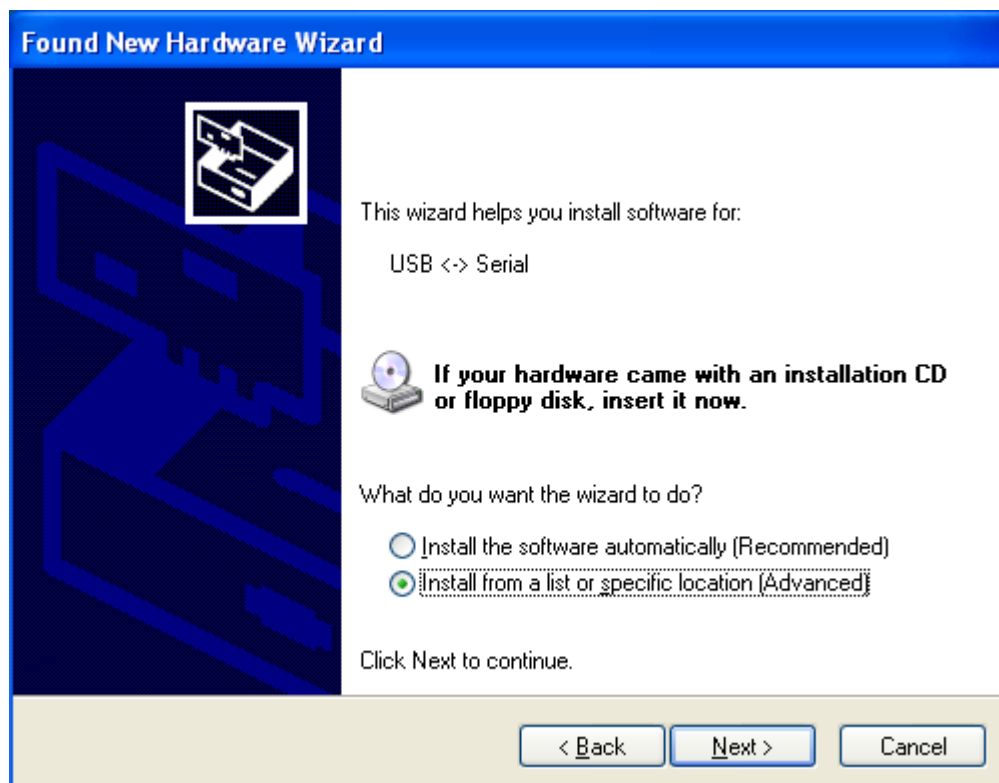
2. Install method of drivers

- ① Download exclusive drivers from our homepage

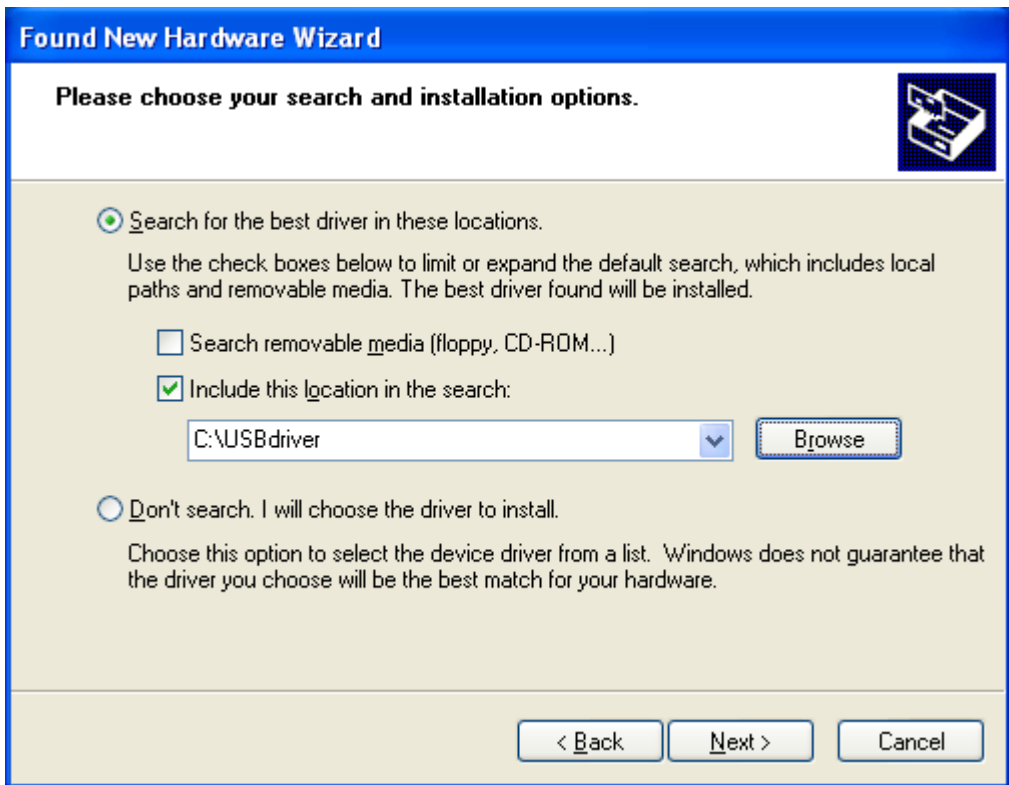
<http://www.minebea-mcd.com/en/product/i-amp/csd892.html>

*Please use the set-up CD that includes USB driver if you purchased EzCTS (communication tool software).

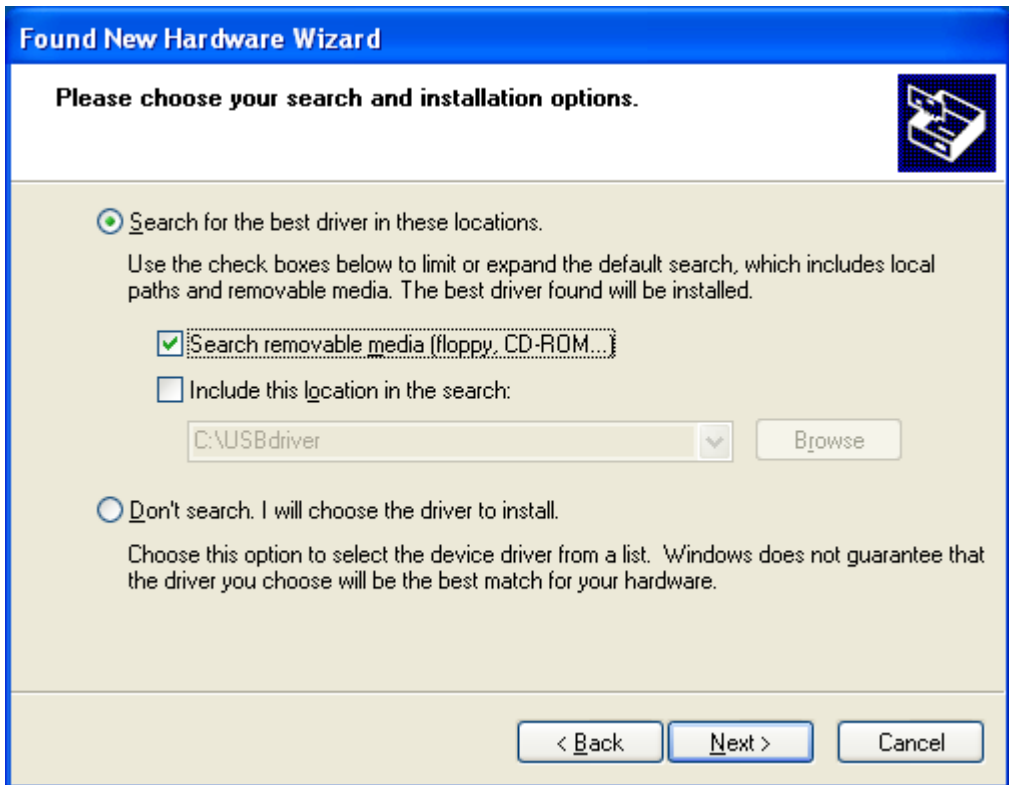
- ② Connect CSD-892-73 to Personal Computer with USB cable, display following window. Select "Install from a list or specific location (Advanced)" and then click [Next>].



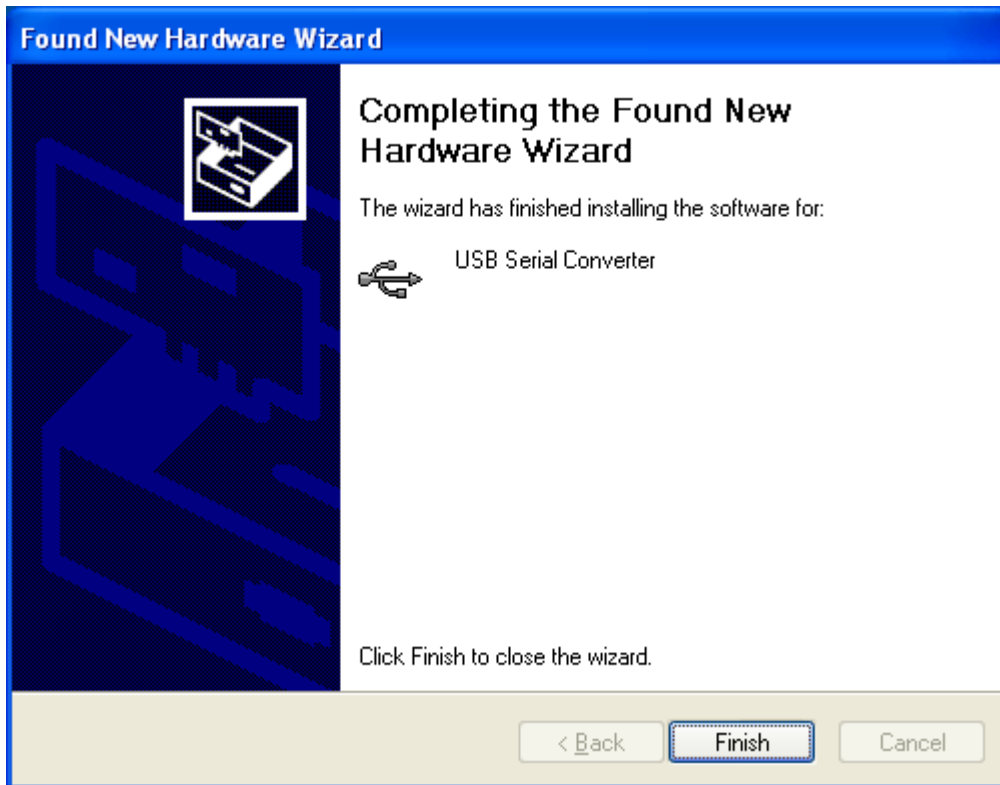
- ③ Select "Search for the best driver in these locations" and browse to it by clicking the browse button. Once the file path has been entered in the box, click [Next>] to proceed.



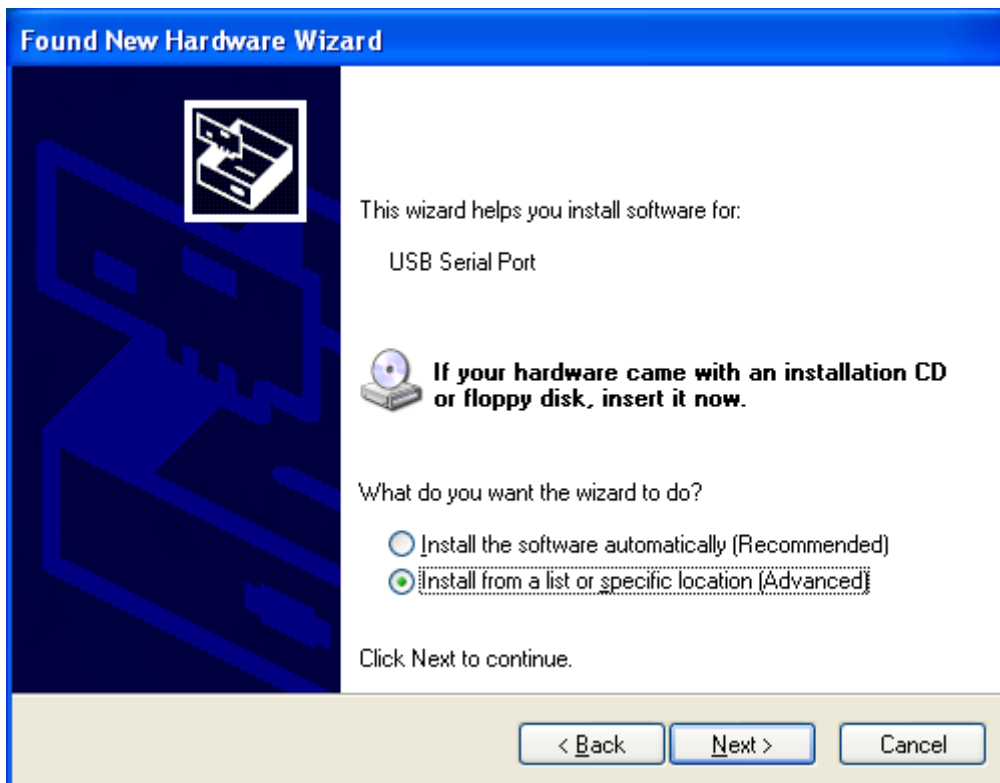
*Those who purchased EzCTS (communication tool software) select "Search removable media" and click [Next>] to proceed.



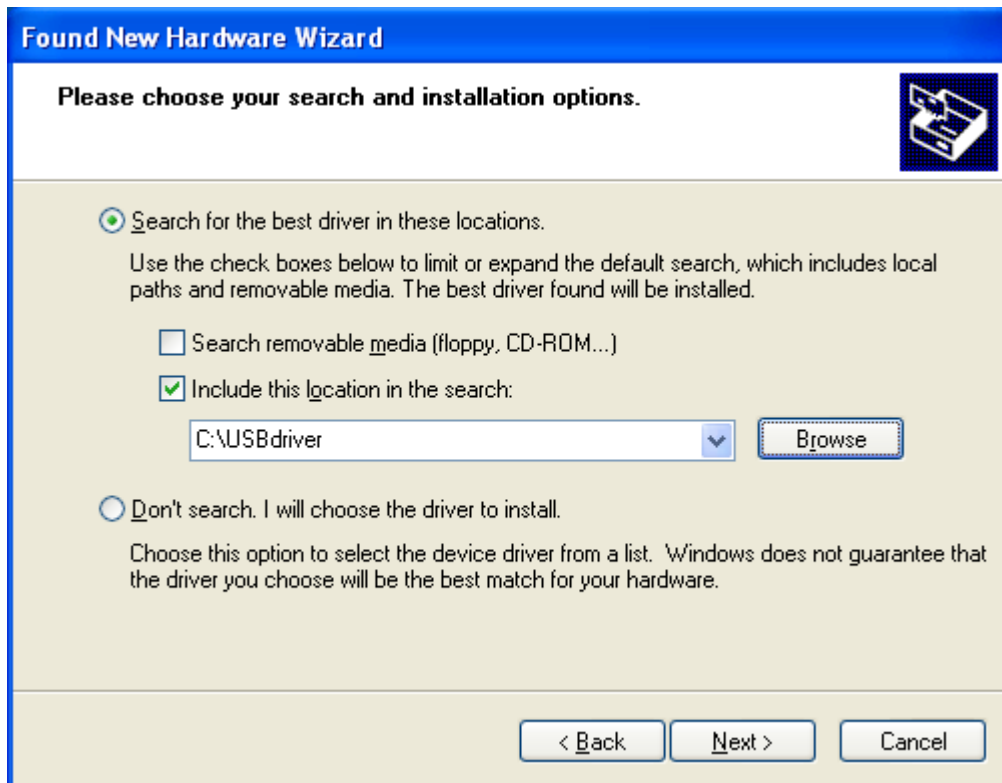
- ④ When displayed as follows, installation of the 1st driver is completed.
Click [Finish] and the installation of the 2nd driver starts.



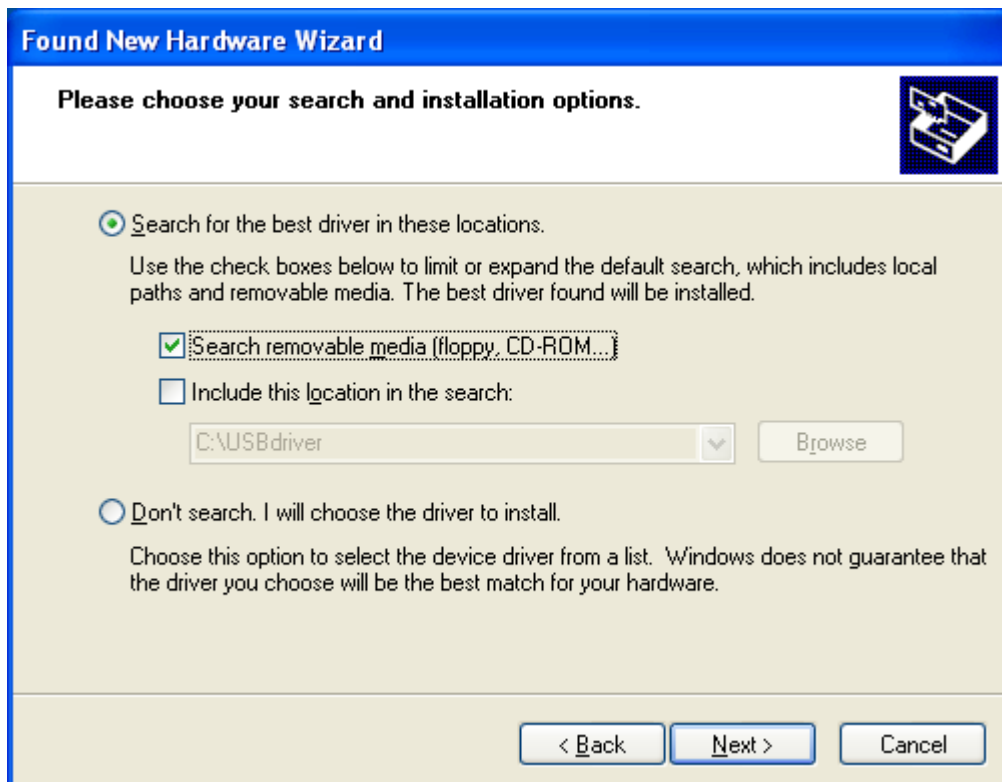
- ⑤ If the 2nd driver installation screen is displayed as follows continuously, choose "it installs from a list or a specific place", and click the [Next>]"



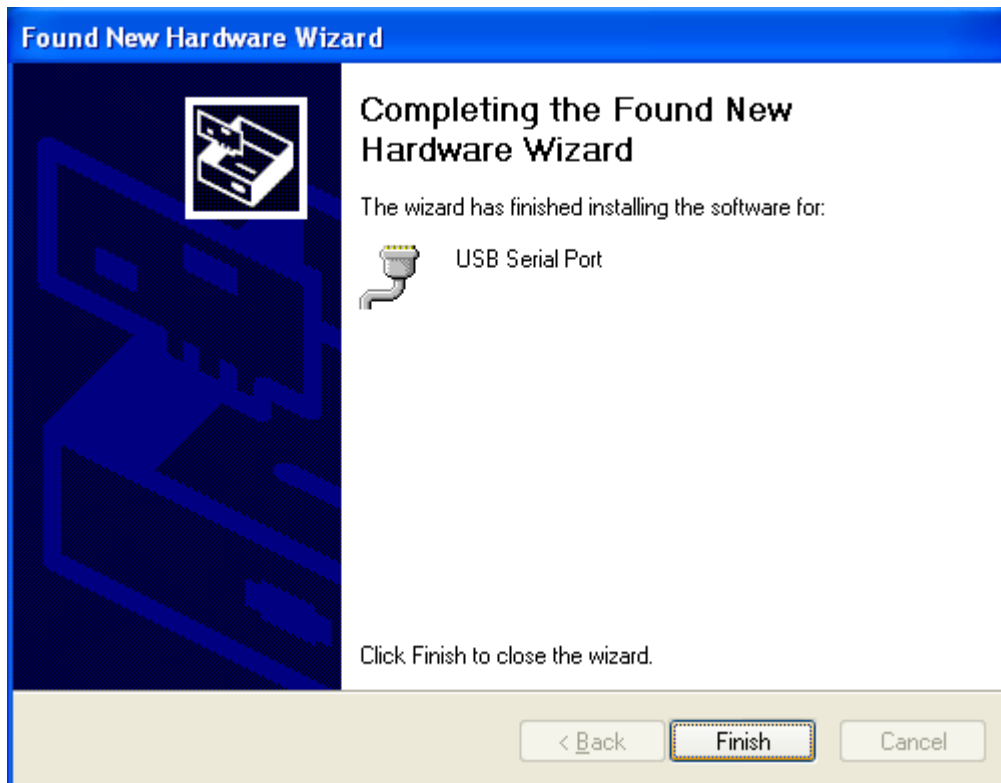
- ⑥ Select "Search for the best driver in these locations" and browse to it by clicking the browse button. Once the file path has been entered in the box, click [Next>] to proceed.



*Those who purchased EzCTS (communication tool software) select "Search removable media" and click [Next>] to proceed.



- ⑦ When the screen displays as follows, installation of the 2nd driver is completed.
Click [Finish] and end installation.

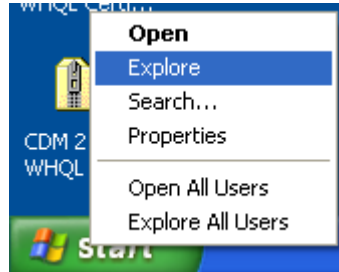


*As for PC that USB driver is installed, the driver's installation is needed again when connecting with other USB port of the PC for the first time.

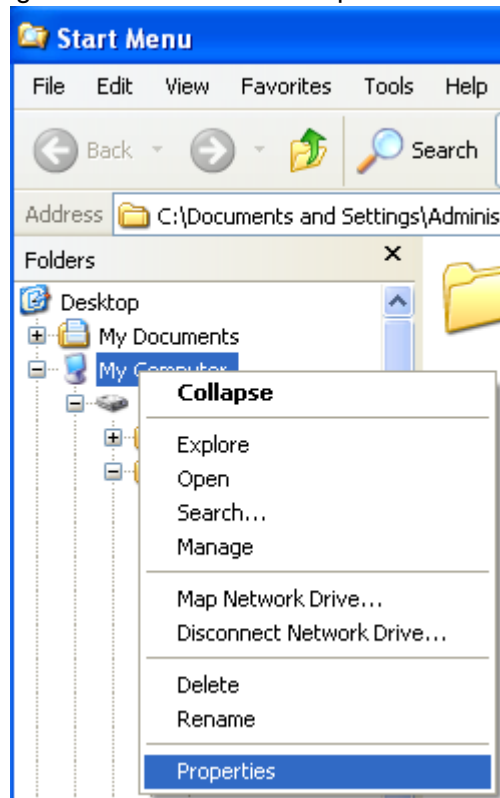
3. The check method of a COM port

A COM port will be checked, if a driver is installed and CSD-892-73 comes to recognize to PC.

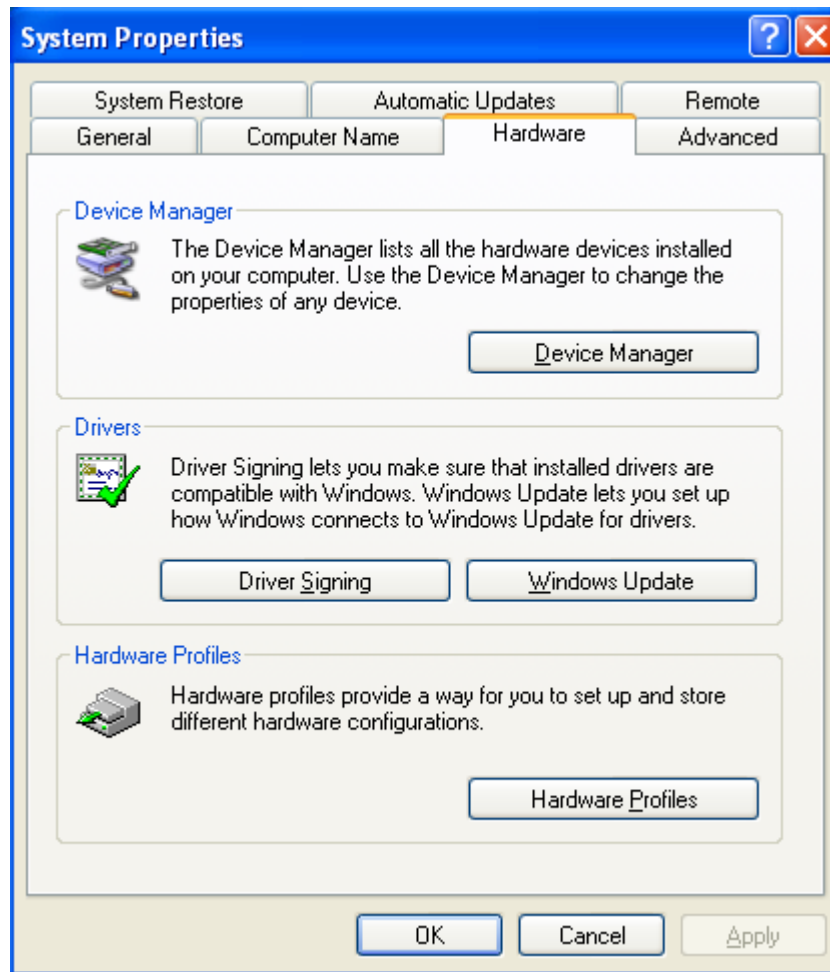
- ① The start button of Windows is right-clicked and chooses Explorer.



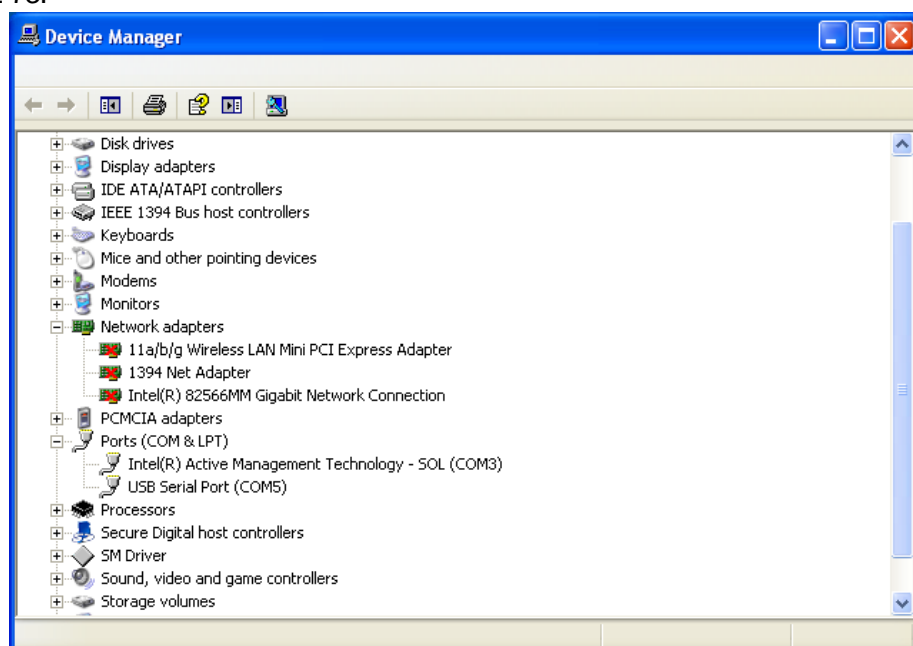
- ② My Computer of Explorer is right-clicked and chooses Properties.



- ③ Choose Hardware tab of the System Properties dialog of a system and click [Device Manager].



- ④ Please open the Ports (COM & LPT) of a Device Manager and check the COM port number of CSD-892-73.



●The contents of this manual may subject to change without notice.

HEAD QUARTER: **MINEBEA CO., LTD.**

4106-73 Miyota, Miyota-machi, Kitasaku gun, Nagano-ken 389-0293 Japan
Tel: +81-267-32-2200 Fax: +81-267-31-1350

Sensing Device Product Sales Management:

1-1-1, Katase, Fujisawa-shi, Kanagawa-ken, 251-8531 Japan
Tel: +81-466-23-2681 Fax: +81-466-22-7191

Sensing Device Business Unit

FUJISAWA PLANT 1-1-1, Katase, Fujisawa-shi, Kanagawa-ken, 251-8531 Japan
Tel: +81-466-22-7151 Fax: +81-466-22-1701

KARUIZAWA PLANT 4106-73 Miyota, Miyota-machi, Kitasaku gun, Nagano-ken 389-0293 Japan
Tel: +81-267-31-1309 Fax: +81-267-31-1353

HOME PAGE ADDRESS <http://www.minebea-mcd.com>